

saferbromley partnership

Contact for this Agenda: Kerry Nicholls
Tel: 020 8313 4602
E-mail: kerry.nicholls@bromley.gov.uk
London Borough of Bromley
23 June 2011

To: Members of the

saferbromley partnership

STRATEGIC GROUP

Councillor Tim Stevens J.P. (Chairman)
Rob Clarke, (London Probation Service)
James Cleverly, (Metropolitan Police Authority)
Sue Cooper, (Affinity Sutton)
Judith Cross, (Bromley Community Engagement Forum)
Nigel Davies, (LBB Director, Environmental Services)
Clive Davison, (LBB Assistant Director, Public Protection)
Charles Griggs, (Borough Police Commander)
Andrew Holcombe, (Borough Commander, Fire Services)
Ulanta Messeter, (Magistrates Court)
Paula Morrison, (Bromley PCT)
Colin Newman, (LBB Head of Community Safety)
Howard Oldstein, (The Glades)
Doug Patterson, (LBB Chief Executive)
Tracy Pidgeon, (London Ambulance Service)
Eithne Rynne, (Community Links Bromley)
Simon Schutte, (UK Border Agency)
Selene Grandison, (SE London Probation Service)
Sarah Walker, (Metropolitan Police Authority)
Non Voting Members: Councillor Reg Adams and Councillor Julian Benington

A meeting of the Safer Bromley Partnership Strategic Group will be held at Community House, South Street, Bromley, BR1 1RH, on THURSDAY 30 JUNE 2011 at 10.00 am

A G E N D A

- 1 INTRODUCTIONS / APOLOGIES FOR ABSENCE
- 2 CONFIRMATION OF CHAIRMAN 2011/12

- 3 MINUTES OF LAST MEETING / MATTERS ARISING (Pages 3 - 10)**
- 4 PERFORMANCE MANAGEMENT REPORT 2010/2011 (Pages 11 - 16)**
- 5 REVIEW OF INITIATIVES FOR PARTNERSHIP/MEMBER PRIORITIES FOR 2010/11 (Pages 17 - 22)**
 - Enough is Enough
 - Mentoring Project
 - Communications/Noticeboards
- 6 PORTFOLIO HOLDER PRIORITIES FOR 2011/12 (VERBAL UPDATE)**
- 7 PUBLIC PROTECTION AND SAFETY PORTFOLIO PLAN 2011/12 (Pages 23 - 32)**
- 8 PERFORMANCE TARGETS 2011/2012 (Pages 33 - 40)**
- 9 SAFER NEIGHBOURHOOD REVIEW (VERBAL UPDATE)**
- 10 OPERATIONAL UPDATE (VERBAL UPDATE)**
- 11 ARSON REDUCTION PLAN (Pages 41 - 66)**
- 12 BCEF WORK PLAN (Pages 67 - 68)**
- 13 FEEDBACK FROM BCEF OUTREACH DAY (Pages 69 - 72)**
- 14 REPORTS FROM SUB-GROUPS**

(Tactical Group Report, DAT Report, YOT Report, Arson Sub Group Report and Bromley Community Engagement Forum) – (Verbal reports)
- 15 INFORMATION ITEMS**
 - a SAFER BROMLEY PARTNERSHIP NEWSLETTER (Pages 73 - 74)**
 - b BCEF MEETING MINUTES: 9TH MAY 2011 (Pages 75 - 82)**
- 16 ANY OTHER BUSINESS**
- 17 DATE AND TIME OF NEXT MEETING**

10.00am, 22nd September 2011
10.00am, 15th December 2011
10.00am, 22nd March 2012

.....

Agenda Item 3

SAFER BROMLEY PARTNERSHIP STRATEGIC GROUP

Minutes of the meeting held at 10.00 am on 24 March 2011

Present:

Councillor Peter Morgan (Chairman)
Councillor Julian Benington
Rob Clarke, (London Probation Service)
James Cleverly, (Metropolitan Police Authority)
Nigel Davies, (LBB Director, Environmental Services)
Clive Davison, (LBB Assistant Director, Public Protection)
Andrew Holcombe, (Borough Commander, Fire Services)
Paula Morrison, (Bromley PCT)
Colin Newman, (LBB Head of Community Safety)
Eithne Rynne, (Community Links Bromley)
Simon Schutte, (UK Border Agency)
Chris Smart, (Detective Chief Inspector: Crime Management)

Also Present:

Susie Clark, (LBB Communications Officer)
Mark Jordan, (LBB Head of Inclusion and Respite)
Jill Lockett, (South London and Maudsley NHS Foundation Trust)
David Olusesan, (Look Ahead Housing and Care)
Lulu Pearce, (Bromley Community Engagement Forum)
Dave Prebble, (Metropolitan Police)
Jamie Rounph, (Affinity Sutton)
Laurie Taylor, (The Glades)

1	INTRODUCTIONS / APOLOGIES FOR ABSENCE	Action
	Apologies were received from Sue Cooper (Affinity Sutton), Judith Cross (Bromley Community Engagement Forum), Karen Fletcher-Wright (LBB Assistant Director, Access and Inclusion), Charles Griggs (Borough Police Commander), Howard Oldstein (The Glades), Ulanta Messeter (Magistrates Court) and Sarah Walker (Metropolitan Police Authority).	
2	MINUTES OF LAST MEETING / MATTERS ARISING	Action
	The notes of the last meeting held on 16 th December 2010 were received. It was noted: Minute 2 – Minutes of Last Meeting/Matters Arising –The Head of Community Safety confirmed that Cora Green, a representative of Victim Support Bromley, had agreed to approach all registered social landlords in the Borough seeking funding for the Safer	CG

	<p>Bromley Van initiative.</p> <p>It was AGREED that the minutes be approved.</p>	
3	<p>PERFORMANCE MANAGEMENT REPORT (QTR 3)</p> <p>Consideration was given to the performance monitoring report for Qtr 3, 2010/11.</p> <p>The majority of the targets had a Green rating, reflecting positive progress since the start of the year. However a small number of targets had been rated Red or Amber.</p> <p>There was a red indicator around the target to support 90% of young offenders into suitable education, employment or training. The Head of Community Safety confirmed that young offenders often faced multiple barriers in engaging with education, employment or training, such as drug use and noted that this target did not recognise the efforts of some young people who were unable to complete the full number of hours prescribed by the target. The Head of Inclusion and Respite highlighted that targeted mental health support was now being made available to young offenders in the Borough.</p> <p>There was an amber indicator around Levels of Assault with Injury (and per 1,000 population rate). The Head of Community Safety underlined that the Partnership had set a target that was more stretching than that set by the Police. There was also an amber indicator around Domestic Abuse Training attendance following a review of the training programme.</p> <p>It was AGREED that the Performance Management Report for Qtr 3, 2010/11 be noted.</p>	Action
4	<p>UK BORDER AGENCY (PRESENTATION)</p> <p>Simon Schutte, Local Immigration Team (LIT) Leader for Bromley and Lewisham gave a presentation on the work of the UK Border Agency. Bromley and Lewisham LIT, one of 15 LITs across London, had been in operation since 14th September 2009 and was made up of around 50 staff; asylum case owners, warranted enforcement staff and caseworkers who considered representations from those facing removal.</p> <p>The Bromley and Lewisham LIT had so far achieved 333 Removals in 2010/11, with an average of 6.66 per week, which met the prescribed target. The LIT regularly concluded around 50% of new asylum applications within 6 months, and in 2010/11 had conducted 31 visits to residential addresses and identified 28 illegal working operations. A further 56 people had been identified through cross-working with Bromley Police, and the LIT had developed close working relationships with a range of agencies including Trading Standards and the Licensing Team.</p>	Action

	<p>In response to a question, Simon Schutte confirmed it was difficult to remove young people under the age of 18, and this allowed their families to remain in the UK. There were robust processes to confirm the age of unaccompanied young people placed in the care of the Local Authority, including an age assessment. Mark Jordan highlighted that some Head teachers in the Borough were concerned that young people might be placed inappropriately in their schools.</p> <p>With regard to people wanting to study or work in the UK, sponsor hearings would be introduced from 1st April 2011. There were currently 82 licensed sponsors within the Borough, including Bromley College of Further and Higher Education.</p> <p>Simon Schutte confirmed that recently announced cuts in the Immigration Service would not have a direct impact on Bromley and Lewisham LIT in 2011/12, however it was possible that the way UK Border Agency services were delivered might alter from 2012/13, particularly with the move towards localism</p> <p>It was AGREED that the presentation be noted.</p>	
5	<p>STRATEGIC ASSESSMENT 2011/12</p> <p>Consideration was given to a report introducing the most recent draft of the Safer Bromley Partnership Strategic Assessment for 2011/12. The proposed Control Strategy priorities for 2011/12 were Anti-Social Behaviour, Crimes against Property, Violence against Person and Public Confidence.</p> <p>The Chairman highlighted the need to develop appropriate performance targets against the new priorities.</p> <p>It was AGREED that:</p> <ol style="list-style-type: none"> 1) The current draft of the Strategic Assessment be noted. 2) The proposed Control Strategy Priorities for 2011/12 be agreed. 3) A further draft of the Strategic Assessment be considered at the next meeting of the Safer Bromley Partnership, including a proposed schedule of performance targets for 2011/12. 	Action
6	<p>SAFER BROMLEY PARTNERSHIP BUDGET 2011/2012</p> <p>Consideration was given to a report setting out the details of the Safer Bromley Partnership budget for 2011/12. Planned areas of expenditure included part-funding for Bromley's Anti-Social</p>	Action

	<p>Behaviour Unit, a Domestic Abuse Strategy Coordinator, the provision of personal protective equipment for restorative justice projects and Safer Neighbourhood Officers. It was also proposed to fund a Junior Citizens Coordinator and a Young Victim's Project to make victim support services more accessible to young people. Councillor Benington highlighted plans to allocate funding to a project addressing issues related to teen pregnancy. The Head of Community Safety confirmed that this project tackled a range of risk behaviours linked to teen pregnancy, including substance misuse. Councillor Morgan noted that the available budget for 2012/13 was expected to represent a cash reduction of 60% on the 2010/11 baseline, and highlighted the need to consider future funding priorities. There was potential for the voluntary sector to play a greater role in supporting community safety priorities. Additional funding would also be provided to the Greater London Authority in future to support work at a Borough-level.</p> <p>It was AGREED that:</p> <ol style="list-style-type: none"> 1) The budget position be noted. 2) The allocations included within the grant claim for 2011/12 be endorsed. 3) Comments on the anticipated funding position for 2012/13 be noted. 	
7	<p>HOME OFFICE CONSULTATION - MORE EFFECTIVE RESPONSES TO ANTI SOCIAL BEHAVIOUR</p> <p>Consideration was given to a report outlining the Government consultation process around how anti-social behaviour should be tackled and the powers that would be made available to local Partnerships, Councils and communities in reducing the harm caused by people and place-related anti-social behaviour. The consultation would close on 3rd May 2011. Partners were requested to provide any comments towards the Partnership response to the Head of Community Safety by mid-April 2011. Paula Morrison underlined the need to include reference to mental health issues relating to anti-social behaviour in the consultation, and suggested Iain Dimond, the Borough Lead for Mental Health services be approached to contribute to the Partnership response.</p> <p>It was AGREED that partners provide any comments on the consultation to the Head of Community Safety by Friday 15th April 2011.</p>	<p>Action</p> <p>All Partners</p>

8	PREVENT GRANT 2010/11	Action
	<p>Consideration was given to a report setting out a proposal for the utilisation of £138,000 for Preventing Violent Extremism that had been made available to the Local Authority in 2010/2011. It was proposed that representations be made to the Council's Executive in April 2011 to fund a project delivering mentoring services for young people most at risk of developing criminal and anti-social behaviour for a three year period. It was hoped that the project would then become a self-sustaining independent trust.</p> <p>It was AGREED that the proposal being made to the Council's Executive in order to secure funding for a mentoring project in the period 2011 to 2014 be supported.</p>	
9	SUSTAINING DOMESTIC ABUSE ADVOCACY PROJECT	Action
	<p>Consideration was given to a report setting out proposals that were currently under consideration for the continuation of the Domestic Abuse Advocacy Project from 1st April 2011. Initially established in 2007 as part of a plan to address the Borough's low level conviction rate for Domestic Violence, targets around increasing the reporting of domestic violence incidents and the proportion of domestic violence incidents leading to sanctioned detections and conviction had been achieved on completion of the project in March 2010, generating a reward payment of £315,000. It was proposed that the Council's Executive allocate £240,000 of this reward money between 2011 and 2014 for the continuation of this project, with the remaining £75,000 used to fund the Safer Bromley Van for two years.</p> <p>Councillor Benington noted the importance of mentoring for those affected by domestic violence. Paula Morrison highlighted the high number of children affected by domestic violence who were referred to health services.</p> <p>It was AGREED that the proposal being made to the Council's Executive in order to secure funding for Domestic Abuse Advocacy in the period 2011 to 2014 be supported.</p>	
10	BETHLEM ROYAL HOSPITAL	Action
	<p>Jill Lockett, Service Director of Behavioural & Developmental Psychiatry CAG at South London and Maudsley NHS Foundation Trust outlined the progress made over the last 12 months with regard to public safety programmes, police liaison and improving safe and therapeutic leave for forensic clients at the Bethlem Royal Hospital. Significant progress had been made over the past year including the introduction of 100 Buddi trackers to support individual</p>	

	<p>risk assessment and the use of therapeutic leave, and improved liaison and joint working between the teams at the Bethlem Royal Hospital and the Bromley Police, including two significant initiatives to address the way assaults (and other offences) committed by inpatients on psychiatric wards were dealt with.</p> <p>The level of risk (of abscond or fail to return) was 0.5% in March 2010. This had now fallen to a risk rate of 0.07%, representing a reduction of 90%. Jill Lockett highlighted that only those clients identified as having a clinical condition of low risk were granted therapeutic leave, however when clients failed to return, the history of a client was often emphasised by the media rather than their current clinical condition. Clients who had absconded were considered 'high risk' by the Police, however this usually referred to the risk the client posed to themselves, which could be misleading to the community.</p> <p>In response to a question, Jill Lockett confirmed that the clients at River House were mentally disordered offenders. Some had indeterminate services, others had been placed there on a hospital treatment order and would either be discharged to the community or transferred back to prison following treatment.</p> <p>It was AGREED that the update be noted.</p>	
<p>11</p>	<p>YOUTH OFFENDING TEAM UPDATE</p> <p>An update on progress across the Young Offending Team would be provided to the next meeting of the Partnership. The Chairman highlighted a recent communication from the Magistrate's Court which had praised the work of the Youth Offending Team.</p> <p>It was AGREED that an update be considered at the next meeting of the Safer Bromley Partnership.</p>	<p>Action</p>
<p>12</p>	<p>REPORTS FROM SUB-GROUPS</p> <p><u>Tactical Group Report</u> – DCI Chris Smart reported that the Police were continuing to achieve a reduction in crime across the Borough, including an 11% reduction in burglary. Initiatives to tackle drug use and supply were ongoing with Operation Salsa targeting suppliers of Class A and B drugs across the Penge and Cator and Crystal Palace wards. A joint operation with Lewisham in the North West of the Borough to tackle street robbery and a pilot scheme around restorative justice would begin in April 2011. A scheme to support child sex offending disclosures, known as 'Sarah's Law' would be in place in April 2011, and Officers were currently undergoing training. In response to a query, DCI Chris Smart confirmed that exclusion from specific geographic areas was used as a condition of bail, however Borough-wide exclusions were not generally used.</p>	<p>Action</p>

	<p>Management Director of the Unit, which would be relocating to the Bromley Civic Centre site in June 2011.</p> <p>(b) Eithne Rynne informed partners about the Mottingham Movers and Groovers. The pilot scheme had recently been established to support and encourage local people to get involved with the community and was proving very successful. There was potential to introduce a similar scheme in the Penge and Anerley area.</p> <p>(c) DCI Chris Smart highlighted the successful conclusion of Operation Minstead, following the recent conviction of Delroy Grant.</p>	
15	MEETING SCHEDULE 2011/12	Action
	<p>All meetings start at 10.00am unless otherwise notified.</p> <p>Thursday 2nd June 2011 Thursday 22nd September 2011 Thursday 15th December 2011 Thursday 22nd March 2012</p>	

The Meeting ended at **12.13 pm**

Chairman

Meeting:	Safer Bromley Partnership Strategic Group
Date:	30 June 2011
Subject:	Performance Management Report 2010/2011 (Full Year)
Author:	Colin Newman, Head of Community Safety colin.newman@bromley.gov.uk

1 SUMMARY

- 1.1 This report is presented in order to update the Strategic Group of the Safer Bromley Partnership on the performance achieved against the targets set in the three year Community Safety Strategy 2008/2011. The information contained within the attached spreadsheet relates to the position recorded at the end of the final year of the strategy (to 31 March 2011).

2 RECOMMENDATION

- 2.1 The Strategic Group is asked to

- Note the performance information contained within the report.
- Consider the information provided and receive an update in relation to targets highlighted as Red or Amber.
- Consider the achievements against crime reduction targets over the previous three years when discussing the related agenda item related to target setting for 2010/2011.

3 BACKGROUND INFORMATION

- 3.1 The attached spreadsheet provides an update of performance at the end of Quarter 4 in the delivery year 2010/2011 and the end of the three year period covered by the Community Safety Strategy. It is noted that the vast majority of targets have been met and are recorded as "Green" for the year end. This is an extremely positive result particularly in relation to the challenging nature of many of the targets and the progress made is a credit to strength of partnership working within the borough.
- 3.2 Of particular note in the positive achievements at the year end are the performance figures in relation to targets set for reducing offences of assault with injury. Members of the Partnership will note that performance against these targets has been ranked at "Amber" for much of the performance year 2010/2011. As such, the final year results are welcomed. Further areas to note are the continued reductions in offences of violence and of criminal damage.

3.3 Those targets that have been assessed as “Amber” are listed below:

Numbers Attending Domestic Violence One Stop Shop – This target is showing delivery of 86% in relation to anticipated numbers attending the One Stop Shop. Detailed analysis of the attendee lists is underway and targeted advertising campaigns are planned for 2011/2012.

Knife Crime Rate – This target was missed by 17 (6% of the target). As always, it should be noted that this category includes incidents where no weapon is actually used or seen but is intimated in the commission of an offence.

Numbers of Young Offenders sentenced to Custody – This target has not been met by a relatively small margin. Each of the cases involved in this performance indicator have been identified and reviewed and, in the view of the Youth Offending Service, custodial sentences were appropriate in light of the nature and seriousness of the offences committed.

3.4 There is only one target that is assessed as “Red” and this continues to be the area of work relating to young offenders and engagement in education, training and employment. It is noted that the final quarter of the year did see an increase against previous quarters but this was not enough to meet the target. Further work is planned in 2011/2012 to address this issues within the Youth Offending Service, supported by a new project funded from the European Social Fund. This project is scheduled to commence in July 2011 and will run until 2014.

LAA	SBP Dash	AWOT	Performance Indicators 2010/11	10/11 Target	Q1 Actual	Q2 Actual	Q3 Actual	Q4 Actual	Status	Source
Increase community re-assurance and public safety, and promote the fact that Bromley is a safe place to live, work, learn and enjoy recreation										
L503			Increase the proportion of residents who, when surveyed, state that they feel Bromley is a safe place to live	85%	N/A	N/A	N/A	N/A	N/A	Public Attitude Survey
NI 47			Reduce the number of people killed or seriously injured in road traffic accidents	121	TBC	TBC	TBC	90	Green	Road Safety
NI 48			Reduce the number of children killed or seriously injured in road traffic accidents	13	TBC	TBC	TBC	5	Green	Road Safety
			Percentage of Safer Neighbourhood Wards with established Safer Neighbourhood Panels.	100%	100%	100%	100%	100%	Green	Met Police
			Ensure that 100% of Neighbourhood Panels include representation of local residents	100%	100%	100%	100%	100%	Green	Met Police
NI 35			Building resilience to violent extremism PSA 26							
NI 18			Adult re-offending rates for those under probation supervision PSA 23		8.17% Jul '09-Jun '10					Probation
NI 30			Reduce Offending by Prolific & Priority Offenders							
Reduce the levels of crimes against the person										
NI 15			Reduce Levels of Most Serious Violent Crime	273	51	61	52	68	Green	Met Police
NI 20			Reduce Levels of Assault With Injury	1780	487	447	460	382	Green	Met Police
		N120	Number of assaults with less serious injury' offences per 1,000 population	5.94	1.61	1.48	1.52	1.26	Green	Met Police
		L1301	Increase the conviction rate for domestic violence perpetrators by 12% over three years.	40%	61%	63%	60%	59%	Green	DV Advocacy
		L1303	The incidents of domestic violence leading to sanction	47%	45%	62%	60%	60%	Green	Met Police
		L1302	The incidents of domestic violence reported	3400	979	1663	3117	1665	Green	Met Police
			Arrest Rate for Domestic Violence	77%	78%	79%	80%	77%	Green	Met Police
			Number of clients accessing the Bromley One-Stop Shop for DV	600	190	119	89	119	Amber	DV Forum*

LAA	SBP Dash	AWOT	Performance Indicators 2010/11	10/11 Target	Q1 Actual	Q2 Actual	Q3 Actual	Q4 Actual	Status	Source
			Numbers of victims using Sanctuary Scheme	55	21	53	21	27	Green	DV Forum*
NI 34			Domestic violence – murder PSA 23							Met Police
			Numbers of reports of repeat victimisation (DV) as a proportion of total number of incidents reported							Met Police
			Increase knowledge, awareness and capability of non-specialist staff by providing multi-agency training days	140		55	85	75	Green	DV Forum
NI 29			Reduce Gun Crime Rate PSA 23	71	20	16	14	10	Green	Met Police
NI 28			Reduce Serious Knife Crime Rate	269	66	67	74	79	Amber	Met Police
NI 26			Specialist Support to Victims of Serious Sexual Offences PSA 23							Met Police
NI 36			Protection Against Terrorist Attack PSA 26							
Reduce the levels of crimes against property										
NI 16			Reduce Levels of Most Serious Acquisitive Crime PSA 25	5574	1369	1214	1497	1435	Green	Met Police
		N16	Number of serious acquisitive crimes per 1,000 population	18.47	4.52	4.01	4.94	4.74	Green	Comm Safety
		Local	Instances of criminal damage	3248	769	697	654	690	Green	Met Police
Reduce levels of youth crime and victimisation										
NI 45			90% of young offenders in suitable education, employment or training	90%	78%	79%	72%	79%	Red	YOT
			Reduce year on year by 2% the number of first time entrants to youth justice system	199	43	30	38	27	Green	YOT
NI 43			Reduce the number of young people within the YJS receiving a conviction in Court who are sentenced to custody.	5%	3%	7%	6%	6%	Amber	YOT
Reduce levels of anti-social behaviour and nuisance										
			% of ASBOs where there is a detected breach in conditions	20%	11%	12.5%	7.1%	0.0%	Green	LBB ASB Unit
			% of identified actionable breaches in conditions that result in court action	95%	100%	100%	N/A	N/A		LBB ASB Unit
			% of applications for ASBOs made to court resulting in ASBO imposed	95%	100%	N/A	N/A	N/A		LBB ASB Unit

LAA	SBP Dash	AWOT	Performance Indicators 2010/11	10/11 Target	Q1 Actual	Q2 Actual	Q3 Actual	Q4 Actual	Status	Source
<i>Reduce the problems caused by drug and alcohol use</i>										
NI 40		Local	Increase the number of PDUs in effective treatment	414	378	TBC	452	452	Green	DAT
			Increased % of drug users retained in treatment for 12 weeks	TBC	TBC	TBC	80%	82%	Green	DAT
NI 39			Decrease Alcohol-related harm hospital admission rates PSA 25							DAT
NI 38			Decrease the drug-related (Class A) offending rate PSA 25							DAT

This page is left intentionally blank

Meeting:	Safer Bromley Partnership Strategic Group
Date:	30 June 2011
Subject:	Review of Initiatives for Partnership Priorities in 2010/2011
Author:	Colin Newman, Head of Community Safety colin.newman@bromley.gov.uk

1 SUMMARY

- 1.1 This report provides an overview of progress in relation to the priorities for action set by the Portfolio Holder for Public Protection and Safety (and Safer Bromley Partnership Chairman) in 2010/2011.

2 RECOMMENDATION

- 2.1 The Strategic Group is asked to

- Note the progress made in relation to the three priority areas adopted by the Portfolio Holder in 2010/2011.
- Support the further development and action to be taken in 2011/2012.

3 BACKGROUND INFORMATION

- 3.1 Having been appointed Portfolio Holder for Public Protection and Safety and Chairman of the Safer Bromley Partnership, in 2010/2011, Councillor Peter Morgan set out three priority areas for action during the year. The first of these related to the harm caused by problematic drug use within the borough. Whilst supporting the provision of effective treatment services and the diversion of drug using offenders into treatment, the Portfolio Holder called for a renewed emphasis on the targeting of those responsible for dealing illegal drugs (delivered under the banner of "Enough is Enough"). The Portfolio Holder also prioritised the provision of support in the form of mentoring for those young people at risk of crime and anti-social behaviour. Recognising the positive influence and guidance that an effective mentor and role model can have on those young people at risk, funding was ring-fenced for the provision of enhanced services. Finally, the Portfolio Holder proposed that there was a need for enhanced communication with local communities and commissioned a number of additional notice boards within local areas and the provision of a Council/Partnership information poster that would encourage the public to engage. A summary of progress is provided overleaf:

Enough is Enough

This the banner given to the cross-partnership work that has been undertaken to tackle drug supply issues within the borough. The work has had a number of key themes, the largest being increased and targeted police action to identify and disrupt those believed to be dealing drugs within the borough. A number of operations have been undertaken and figures for the performance year 2010/2011 indicate 31 warrants that were executed where illegal drugs were recovered. There have been seventeen offenders charged with drug related offences and a further twelve remain on pre-charge bail for drugs or Proceeds of Crime Act offences. Significant quantities of illegal substances and cash have been seized. In addition, as part of the prevention work undertaken by the Police Schools Team, officers have delivered in excess of 225 talks and awareness sessions in relation to drugs, many of which included input ByPass, the borough drug service for young people.

In addition to this targeted work, the borough undertook an advertising campaign highlighting the fact that drug supply would not be tolerated and inviting member of the community to report evidence of drug supply. This campaign took the form of street based advertising within the borough's primary town centres, newspaper advertising and editorial in partnership with the NewsShopper and beer mats and other advertising within licensed premises. Licensed premises and the role of the Council's Licensing Policy were also important with the review of the Licensing Policy providing a timely opportunity to re-focus the areas of that document relating to managing drugs etc. Moreover, through cooperation with licensees within the borough, a number of drug dog operations have been carried out within licensed premises across the borough. A total of six operations have been supported by drug detection dogs from a private contractor and, whilst there have been no drug related arrests as a result of these operations, the high visibility, high impact nature of the work has sent a clear message to those using licensed premises that drug dealing will not be tolerated within the borough. Additional operations have also been conducted in partnership with British Transport Police.

Support for Young People – Mentoring Project

Preliminary work revealed that the existing Bromley Mentoring Project was working with a bank of 62 trained and vetted mentors and these individuals were offering support to 50 young people. Whilst some of these young people could be identified as being at risk of criminal or anti-social behaviour, it was acknowledged by all that these individuals were not targeted for the provision of mentoring support in any arena other than through the behaviour service. Having identified this as a gap in coverage, the Portfolio Holder secured funding for a three year period to support the development of the service.

A service level agreement has been agreed with the Bromley Mentoring Project with headline delivery targets of doubling the number of trained and vetted mentors and doubling the number of young people who are supported by a mentor (target of 125 mentors and 100 young people). Priority within these targets must be given to those young people at risk of crime or anti-social behaviour and, as such, particular emphasis would be placed on work with the Youth Offending Service and the Anti-Social Behaviour Unit. In

addition, a key element of the service level agreement is the progression towards trust status for the Bromley Mentoring Project, enabling access to increased and alternative levels of funding in future years.

Since the project commenced in March 2011, introductory sessions have been delivered to both the Youth Offending Service and the Anti-Social Behaviour Unit and referral mechanisms and criteria have been approved. In the first three months of delivery, the number of mentors has increased by 29 and agreement secured to provide mentoring support for all young people subject to Reparation Orders at the Youth Offending Service. Referrals of young people are also increasing from the Anti-Social Behaviour Unit.

Improved Communication – Notice Boards

Having conducted a review of the placement of Council notice boards across the borough, a gap analysis identified several wards that did not have coverage. These wards were prioritised for initial assessment regarding the suitability of placing notice boards in locations, including the issue of ownership and maintenance of these boards. In total, seven of the anticipated nine new notice boards have been installed with the final ones due for installation later this year. The wards that have benefited from this additional resource are Plaistow & Sundridge, Mottingham and Chislehurst North, Orpington and Farnborough & Crofton. In addition, a new “pro-forma” information poster has been designed to be displayed on these new notice boards but also on those existing notice boards across the borough. A draft example of this notice is attached but details include those of local Councillors, Members of Parliament, Safer Neighbourhood Teams and other useful community contacts.

- 3.2 It is envisaged that the Mentoring Project will continue for the coming three years, with the scheme being ready to advance to Trust status at the end of the second year. Work will continue to target drug supply and disruption of illegal drug markets throughout 2011/2012. Further update reports will be presented to the Partnership as appropriate.

This page is left intentionally blank

Your local MPs

- BECKENHAM**
 Bob Stewart MP
Telephone: 020 7219 7011
 e-mail: bob.stewart.mp@parliament.uk
- BROMLEY AND CHISLEHURST**
 Bob Neill MP
Telephone: 020 7219 8471
 e-mail: neillb@parliament.uk
- ORPINGTON**
 Jo Johnson MP
Telephone: 020 7219 7125
 e-mail: jo.johnson.mp@parliament.uk
- LEWISHAM WEST AND PENGE**
 Jim Dowd MP
Telephone: 020 7219 4617
 e-mail: dowdj@parliament.uk

Your local councillors



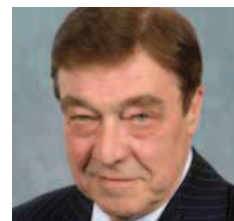
Councillor **Ellie Harmer**

 Members Room,
Civic Centre,
Stockwell Close,
Bromley BR1 3UH
 07834 418 222
 ellie.harmer@bromley.gov.uk



Councillor **Peter Morgan**

 Members Room,
Civic Centre,
Stockwell Close,
Bromley BR1 3UH
 020 8460 7586
 peter.morgan@bromley.gov.uk



Councillor **Michael Turner**

 Members Room,
Civic Centre,
Stockwell Close,
Bromley BR1 3UH
 020 8464 5267
 michael.turner@bromley.gov.uk

www.bromley.gov.uk

Your Safer Neighbourhood Team



Plaistow and Sundridge Team

Sgt David Morbin
 PC Steve Chapman
 PC Katy Morant
 PC Lisa Browning
 PCSO Peter Scott
 PCSO Christine Wayne
 PCSO James Hextall
 PCSO Mara Sow
 PCSO Steve Proctor
 PCSO Alex Brown
Phone 020 8721 2613
Mobile 07920 233849

Useful numbers

Crimestoppers 0800 555 111

Call anonymously with information about crime

Break free from Domestic Abuse for advice

call 0808 2000 247 or text the helpline 07963 479 602

Anti Social Behaviour Unit

call in confidence 020 8461 7907

email antisocial.behaviourunit@bromley.gov.uk

Neighbourhood Watch

www.inwa.net (or via your Safer Neighbourhood Team)

Bromley Community Engagement Forum

For information about the Forum and the work of its partners.

Visit www.bcef.org.uk or Call 020 8658 7168

NHS Direct

For health advice and reassurance, 24 hours a day, 365 days a year

Call 0845 4647. To find your nearest NHS Services visit

www.nhsdirect.nhs.uk

Safer Bromley Partnership

The Safer Bromley Partnership includes Bromley Council, Police, Fire Service, Probation and Housing Associations working together to keep Bromley safe.

email: community.safety@bromley.gov.uk



Your local MPs

- **BECKENHAM**
Bob Stewart MP
Telephone: 020 7219 7011
e-mail: bob.stewart.mp@parliament.uk
- **BROMLEY AND CHISLEHURST**
Bob Neill MP
Telephone: 020 7219 8471
e-mail: neillb@parliament.uk
- **ORPINGTON**
Jo Johnson MP
Telephone: 020 7219 7125
e-mail: jo.johnson.mp@parliament.uk
- **LEWISHAM WEST AND PENCE**
Jim Dowd MP
Telephone: 020 7219 4617
e-mail: dowdj@parliament.uk

Your local councillors






Councillor **Robert Evans**

 29 Drayton Avenue,
Locksbottom BR6 8JN
 01689 853002
 robert.evans@bromley.gov.uk



Councillor **Charles Joel**

 61 Ferndown Avenue,
Orpington BR6 8DE
 020 8460 7586
 charles.joel@bromley.gov.uk



Councillor **Tim Stevens**

Chairman, Safer Bromley Partnership
 Lilly's, Chelsfield Lane,
Chelsfield BR6 7PR
 01689 876721
 tim.stevens@bromley.gov.uk

www.bromley.gov.uk

Your Safer Neighbourhood Team



Farnborough and Crofton Team

Sgt Kevin Pittard
PC Lisa Davies
PC Richard Thomas
PCSO Lucy Davis
PCSO Julia Smith
PCSO Trevor Ford
PCSO Fitz Palmer
PCSO Bob Kensit
PCSO Steve Ozden
Phone 020 8721 2606
Mobile 07920 233856

Useful numbers

Crimestoppers 0800 555 111

Call anonymously with information about crime

Break free from Domestic Abuse for advice

call 0808 2000 247 or text the helpline 07963 479 602

Anti Social Behaviour Unit

call in confidence 020 8461 7907

email antisocial.behaviourunit@bromley.gov.uk

Neighbourhood Watch

www.inwa.net (or via your Safer Neighbourhood Team)

Bromley Community Engagement Forum

For information about the Forum and the work of its partners.

Visit www.bcef.org.uk or Call 020 8658 7168

NHS Direct

For health advice and reassurance, 24 hours a day, 365 days a year

Call 0845 4647. To find your nearest NHS Services visit

www.nhsdirect.nhs.uk

Safer Bromley Partnership

The Safer Bromley Partnership includes Bromley Council, Police, Fire Service, Probation and Housing Associations working together to keep Bromley safe.

email: community.safety@bromley.gov.uk



Meeting:	Safer Bromley Partnership Strategic Group
Date:	30 June 2011
Subject:	Public Protection and Safety Portfolio Plan 2011/2012
Author:	Colin Newman, Head of Community Safety colin.newman@bromley.gov.uk

1 SUMMARY

1.1 This report introduces the Council’s Portfolio Plan for Public Protection and Safety 2011/2012.

2 RECOMMENDATION

2.1 The Strategic Group is asked to

- Comment on the Council’s Public Protection & Safety Portfolio Plan for 2011/2012.
- Identify areas where greater Partnership working can improve objectives within each priority area.

3 BACKGROUND INFORMATION

3.1 The Public Protection and Safety (PPS) Portfolio provides the lead for the delivery of the Council’s activity to meet the vision of making Bromley a safer place. Unlike other Portfolios within the Council, the activities overseen by the PPS Portfolio Holder are the responsibility of several departments across the Council and of multiple partner organisations. The Portfolio Plan sets out the Council’s priorities for action in making the borough a safer place and an outline of how the Authority will meet its duty as a lead member of the Safer Bromley Partnership.

3.2 For 2011/2012, the focus of the Portfolio Plan has been on the work of various service areas that are part of the Council’s Public Protection and Safety Division within the Environmental Services Department. As such, the majority of the plan is presented under the following headings:

- Public Health Nuisance
- Trading Standards
- Food, Safety and Licensing
- Environmental Protection
- Community Safety and Anti-Social Behaviour

- 3.3 In addition to these major service areas, a final section has been included within the Portfolio Plan that acknowledges the cross departmental and partnership nature of the work undertaken by the Public Protection and Safety Portfolio. In particular, this section of the Plan for 2011/2012 includes work in relation to reducing the harm caused by illegal drugs, reducing youth offending and protecting vulnerable adults. The final draft of the Portfolio Plan is attached at Appendix 1 setting out the detail of the delivery plan under the themes and priority areas outlined above.

PUBLIC PROTECTION & SAFETY PORTFOLIO PLAN 2011/2012

7a

Foreword

The London Borough of Bromley has one of the lowest levels of crime in London and one of the highest proportions of residents who feel the borough is a safe place to live. Bromley's position as one of the safest boroughs in London is a testament to the solid and robust partnership working of the Safer Bromley Partnership, chaired by the Portfolio Holder for Public Protection and Safety and supported by a dedicated team of officers in both the Council and the local Police. We work very closely with a range of partners including the police, health services, emergency services, probation and the voluntary sector to ensure levels of crime and anti social behaviour.

Whilst the Council, alongside the Police, is one of the lead agencies in maintaining low levels of crime, disorder and anti-social behaviour, we recognise that we cannot deliver this in isolation. We work with all our partners in the statutory and voluntary sector, but, more importantly, we are committed to ensuring the maximum engagement of our residents and communities in taking decisive action to make Bromley a better place for all.

All Departments and Portfolios within the Council have a part to play in reducing crime and disorder and maintaining the borough's position as a safe and pleasant place to live. At the core of the Council's activity is the Public Protection and Safety Division within the Environmental Services Department. There are five key service delivery areas:

Public Health Nuisance

Trading Standards

Food, Safety and Licensing

Environmental Protection

Community Safety and Anti Social Behaviour

This Portfolio Plan takes these service areas as a framework for activity. It provides an outline of priorities for each service area, combining these to outline the core of the Council's activity to make Bromley safer place.

Councillor Tim Stevens J.P.
Portfolio Holder for Public Protection and Safety

Public Protection and Safety Portfolio Plan 2011 – 2012

Service Area: Public Health Nuisance

Service Lead: Jackie Goad

E-Mail: jackie.goad@bromley.gov.uk

Service Outline:

The Public Health Nuisance Team investigate statutory nuisances including noise arising from domestic and commercial premises, accumulations of rubbish on private land, smoke and ash nuisance from domestic and commercial bonfires, obtrusive lighting, filthy and verminous premises and incidences of flytipping on private land.

Approximately 5000 public health nuisance complaints were received in 2010/2011 of which 76.5% were noise related matters. The number of complaints relating to domestic noise (loud music, dog barking, DIY, etc) increased by 7% in 2010/11. 68% of the total number of noise complaints received were reported via the emergency out of hours noise service which operates from 17:00 - 08:30hours, 365 days of the year. This was a 7% increase on the number reported in 2009/10.

The number of reported complaints concerning rubbish accumulations and flytipping increased by 9% in 2010/2011. Large scale flytipping in certain areas of the borough persists whilst general rubbish accumulations and flytipping in alleyways and service roads continue to be a problem.

2011 – 2012 Priorities:

The priorities for the Public Health Nuisance Service area are as follows:

- Investigate and take formal action against persistent noise offenders whilst empowering others bothered by noise to take their own initial action.
- To provide an out of hours noise service which reflects demand
- Investigate, disrupt and take formal action against those persons involved in both the carriage of and the illegal disposal of controlled waste, targeting flytipping hotspots in the borough including service road and alleyways.
- Continue to provide appropriate publicity and information to the public when offenders of both noise nuisance and waste related offences have been prosecuted.

Measuring Success:

	Target	2010/2011 Baseline	2011/2012 Target	Comment
1.1	Empower those bothered by noise through the use of the on-line report toolkit and use of diary sheets as part of the initial noise investigation procedure.	0	500	
1.2	Undertake a review of the current out of hours noise service to reflect service demand and reduce overall cost.	n/a		Review completed and report to PDS in by 2012.
1.3	Carry out a number of multi agency intelligence led operations in areas identified as fly tipping 'hotspots'.	1	3	Target vehicles carrying controlled waste.
1.4	Increase the number of S34A notices served requiring the production of waste transfer notes and written descriptions.	12	18	To be served when carrying out multiagency operations and flytipping investigations.
1.5	Increase the number of notices served in respects of clearing rubbish accumulations in alleyways and service roads.	60	70	Notices under the Prevention of Damage by Pests Act 1949 and Public Health Act 1936.

Public Protection and Safety Portfolio Plan 2011 – 2012

Service Area: Trading Standards

Service Lead: Rob Vale

E-Mail: rob.vale@bromley.gov.uk

Service Outline:

The main aim of the Trading Standards service is to ensure there is a safe and fair trading environment in Bromley.

2011 – 2012 Priorities:

The priorities for the Trading Standards Service area are as follows:

- Prevent older and vulnerable consumers from becoming victims of commercial crime.
- Investigate, disrupt and where possible take formal action against traders who target older and vulnerable consumers.
- Investigate, disrupt and where possible take formal action against traders who operate in the informal economy.
- Prevent the sale of age restricted products, such as alcohol, tobacco and fireworks, to young consumers in Bromley.
- Carry out a range of intelligence led enforcement activities aimed at protecting consumers and businesses in Bromley from unfair trading practices which cause consumer detriment and an unlevel playing field in the market place.

Measuring Success:

	Target	2010/2011 Baseline	2011/2012 Target	Comment
1.1	Respond to all level 1 consumer complaints where a vulnerable consumer is the target of a commercial crime.	100%	100%	A level 1 complaint is where a suspected rogue trader is at the scene or close by.
1.2	Complete a programme of pro-active rogue trader days based on local intelligence aimed at raising the profile of the service and disrupting suspicious traders.	10	10	Operation Enid is based on intelligence of rogue trader activity in the borough.
1.3	Provide talks to partner organisations and consumer groups to help prevent older consumers from becoming victims of scams and doorstep crime.	62	50	Groups who represent older consumers are our target audience.
1.4	Carry out test purchase operations to prevent age restricted products being sold to young consumers.	11	10	In addition to test purchase operations we plan to offer training events for small businesses.
1.5	Complete a programme of intelligence led enforcement activities aimed at protecting consumers and local businesses	10	10	Deliver via market surveillance, and other action appropriate to the circumstances

Public Protection and Safety Portfolio Plan 2011 – 2012

Service Area:	Food, Safety and Licensing	
Service Lead:	Paul Lehane	E-Mail: paul.lehane@bromley.gov.uk

Service Outline:

Food Service

- To sustain and improve the standards of safety of food manufactured, prepared and supplied in LBB.
- To exercise control and surveillance of communicable diseases.

Health & Safety Service

- To support the proper management of risk in businesses presenting as high risk, poor performers or targeted as part of nationally or locally identified need (in line with Better Regulation agenda).
- Investigating fatalities, major injuries, over 3 day absences and occupational diseases.
- Investigating serious complaints.

Licensing Service

- To facilitate and support businesses or individuals who require a licence or permit to undertake a specific activity.
- Enforce compliance with licence conditions to ensure appropriate protection to affected groups or individuals is maintained.

2011 – 2012 Priorities:

Food Service

- Investigate outbreaks / cases of food poisoning
- Reduce the number of Zero and One star food businesses
- Undertake risk based inspections of food businesses

Health and Safety Service

- Investigate serious accidents / incidents
- Investigate complaints about significant risks in workplaces
- Undertake targeted inspections / projects with high risk businesses

Licensing Service

- Run Best Bar None award scheme 2011 / 2012
- Actively support selected Pub Watch meetings to promote the licensing objectives.
- Introduce invoicing for licence renewals.
- Actively secure compliance with licensing conditions in targeted premises.

Measuring Success:

	Target	2010/2011	2011/2012	Comment
	Food Service	Baseline	Target	
1.1	Reduce the number of zero and one star food businesses based on the ratings at 1 April.	0 star 95% 1 star 75%	0 star 95% 1 star 75%	
1.2	Investigation of outbreaks / cases of food poisoning (% selected according to Health Protection Agency criteria).	100%	100%	
	Health and Safety Service			
1.3	Undertake 75 planned high risk inspections	200	75	
1.4	Record and assess all reported accidents. Select serious incidents for investigation based on agreed criteria, serious.	300 reports 150 investigated 50%	300 reports Up to 150 investigated50%	
	Licensing Service			
1.5	Offer Best Bar None award scheme to pubs & clubs in Bromley & Beckenham. Target no. of entries 15.	12	15	
1.6	Target high risk businesses for interventions / enforcement.	33	20	

Public Protection and Safety Portfolio Plan 2011 – 2012

Service Area: Environmental Protection

Service Lead: Jim McGowan

E-Mail: jim.mcgowan@bromley.gov.uk

Service Outline:

Coroner And Mortuary Services - To be responsible for the Bromley element of a consortium which jointly runs and finances the HM Southern Coroners service.

Scientific Services - To be responsible for: Air Quality (statutory monitoring of air quality and Bromley's Air Quality Strategy); Contaminated Land (investigation, enforcement and remediation, Register, risk assessments, GIS mapping and Strategy). Water Supplies (ensuring the local authority complies with its statutory duties re. the provision of wholesome water supplies). Authorised Processes (authorisation and enforcement of Regulations for LBB Authorised Processes); Asbestos (advice, investigation and reporting).

Drainage And Pest Control - Responsible for the investigation and enforcement of drainage legislation in Bromley.

Stray & Abandoned Dogs - Responsible for Bromley's statutory duties relating to stray & abandoned dogs.

Emergency Planning - Maintain the statutory emergency planning and business continuity arrangements for Bromley.

CCTV - To provide a pro active 24/7, 365 days pa monitoring service of the Borough's CCTV network.

2011 – 2012 Priorities:

Coroner and Mortuary Services - Reduce running costs of the Coroners Service.

Scientific services - Complete the Statutory Detailed Screening and Assessment for the Air Quality Management. Ensure monitoring of air quality at the Borough's continuous monitoring site and high traffic junctions. Carry out a Contaminated Land Risk Assessment and develop map of contaminated sites for identification of the risks. Develop a system for the statutory monitoring of private water supplies and distribution systems. Ensure registration and renewals for all Authorised Processes in Bromley. Set up a service for the investigation and reporting on asbestos in LBB properties and develop related income generation services in the private sector. Advise residents on the handling and disposal of asbestos cement products. Maintain the advice on the Bromley web site.

Drainage and Pest Control - Carry out all investigations and enforcement in relation to pest control and drainage problems.

Stray & Abandoned dogs - Develop systems to reduce the running costs involved in meeting the Statutory responsibilities for stray and abandoned dogs.

Emergency Planning - Enhance and maintain the organisations emergency planning arrangements both for local and regional emergency response.

CCTV - Introduce joint contracts with adjoining Boroughs for the operation of CCTV services in Bromley.

Measuring Success:

	Target	2010/2011 Baseline	2011/2012 Target	Comment
1.1	Relocate Coroners office and staff to new office accommodation and introduce an advanced rotational system of hosting Jury inquests.	n/a	September 2011	
1.2	Set up investigation and reporting system of asbestos materials contained in properties owned by the LBB.	Nil	20 pm	
1.3	Assess the environmental health implications of Bromley planning applications.	50 pm	50 pm	
1.4	Complete the Statutory Detailed Screening Assessment for the Air Quality Management Area to ensure air quality monitoring takes place across the Borough.	n/a	31/08/2011	
		30 sites	30 sites	
1.5	Carry out a Contaminated Land Risk Assessment.	n/a	31/01/2012	

Public Protection and Safety Portfolio Plan 2011 – 2012

Service Area:	Community Safety and Anti Social Behaviour Team	
Service Lead:	Colin Newman	E-Mail: colin.newman@bromley.gov.uk

Service Outline:

The Community Safety and Anti-Social Behaviour Team are responsible for a range of activity in order to reduce crime and disorder and make Bromley a safer place. The team's responsibility includes the support of Partnership working with other agencies such as the Police, Fire Brigade and Probation Service, as well as ensuring that Council departments work together to reduce crime. The team also provide support to community groups and voluntary sector agencies.

There are also specialist posts responsible for the management of services to reduce the harm caused by domestic abuse and to coordinate the borough's response to anti-social behaviour. A team of specialist officers is tasked with responding to and tackling incidents of anti-social behaviour and seeking long term solutions to problems that rise.

2011 – 2012 Priorities:

The Safer Bromley Partnership, in the Strategic Assessment for 2011/2012, formally adopted the following priorities for the year:

- Reducing levels of anti-social behaviour.
- Reducing levels of crimes against the person.
- Reducing levels of crimes against property.
- Increasing public confidence in the work of the Partnership to reduce crime and disorder.

In addition to these Partnership priorities, the Portfolio will focus on the following areas:

- Continuation of work to support victims of Domestic Abuse and development of cross-departmental action to target prevention initiatives amongst young people.
- Provision of support for young people at risk of crime or anti-social behaviour in the form of mentoring.
- Provision of tailored intervention packages to divert young people from crime and disorder.
- Ensuring that service delivery structures are fit for purpose in preparation for forthcoming changes in legislation (e.g. ASB Consultation, changes in Regulation of Investigatory Powers Act requirements).

Measuring Success:

	Target	2010/2011 Baseline	2011/2012 Target	Comment
1.1	Reduce number of most serious violent crimes per 1,000 population.	TBC	2% Reduction	
1.2	Reduce number of serious acquisitive crimes per 1,000 population.	TBC	1% Reduction	
1.3	Increase conviction rate for Domestic Abuse in cases managed by Domestic Abuse Advocates.	59.31%	62%	
1.4	Increase the number of approved mentors and the number of young people matched to a mentor (focus on those young people at risk of criminal and anti-social behaviour).	62 Mentors 50 Mentees	90 Mentors 75 Mentees	
1.5	Percentage of applications for ASBOs made to court resulting in ASBO imposed.	95%	98%	

Public Protection and Safety Portfolio Plan 2011 – 2012

Service Area: Partnership and Cross Portfolio Issues

Service Lead: Colin Newman **E-Mail:** colin.newman@bromley.gov.uk

Service Outline:

The Public Protection and Safety Portfolio has a remit that is truly Council wide, operating as a cross-departmental delivery Portfolio. Working in this way ensures that the whole Council remains at the forefront of making Bromley a safer place and secures the Portfolio's position as a lead member of the Safer Bromley Partnership.

Whilst work with external partners includes close relationships with the Police, Health, agencies, Fire Brigade and Probation, the work of this Portfolio also involves cross-departmental working on issues such as the Every Child Matters outcome of keeping young people safe, or the Adult & Community outcome of safeguarding vulnerable adults.

Examples of these priority areas are listed below:

- reducing anti-social behaviour, nuisance and enviro-crime
- reducing offending amongst young people
- reducing the harm caused by drug and alcohol problems
- tackling domestic abuse and elder abuse
- ensuring the safety and well-being of vulnerable adults who may be at risk of abuse

2011 – 2012 Priorities:

Work in 2011-2012 will continue to focus on reducing the harm caused problematic drug and alcohol use, and the Portfolio will continue to lead on initiatives to reduce the availability of illegal substances within the borough. In addition, the Portfolio will continue to support the work of the Youth Offending Service within Bromley in its work to reduce offending.

The Portfolio Holder for 2011/2012 has also prioritised the issue of protecting older people from crime and anti-social behaviour. The Portfolio will work to ensure close synergy with the priorities of the Safeguarding Adults Board, supporting the delivery of that body's Annual Conference. In particular, the Portfolio will work to assist the Safeguarding Adults Board in continuing to improve awareness about how to spot signs of abuse and when to report it to the Lead Agency. Priority will be given to promoting the role of the community in safeguarding vulnerable adults. In addition, as well as work to target rogue traders and criminals who target elderly people, work will be undertaken to improve understanding between generations, identifying fears and using innovative projects to break down barriers.

Measuring Success:

	Target	2010/2011 Baseline	2011/2012 Target	Comment
1.1	Reduce year on year by 2% the number of first time entrants to youth justice system	32% (Local Data)	2% Reduction	
1.2	Reduce the number of young people within the Youth Justice System receiving a conviction in Court who are sentenced to custody.	6%	5%	
1.3	Increase the number of Problematic Drug Users in effective treatment.	452	TBC	Target to be set
1.4	Percentage who completed treatment successfully and in a planned way.	56%	TBC	Target to be set
1.5	Deliver training sessions addressing issues of domestic abuse where the perpetrator has care responsibility.	New	2 sessions	Develop and deliver training
1.6	Introduce Matrix assessment tool for anti-social behaviour referrals to identify vulnerable victims	New	Baseline	Identify numbers of reports where victim is vulnerable.

This page is left intentionally blank

Meeting:	Safer Bromley Partnership Strategic Group
Date:	30 June 2011
Subject:	Performance Targets 2011/2012
Author:	Colin Newman, Head of Community Safety colin.newman@bromley.gov.uk

1 SUMMARY

- 1.1 This report outlines proposals for a streamlined performance monitoring regime for the year 2011/2012 and beyond. It sets out progress in the reduction of crime, disorder and anti-social behaviour over the past five years, outlines issues with the previous the performance monitoring regime and proposes a more focused approach for 2011/2012.

2 RECOMMENDATION

- 2.1 The Strategic Group is asked to

- Reflect on the five year crime trends included within this report, demonstrating sustained reduction in key areas of crime and disorder.
- Note issues experienced with the previous performance monitoring regime and endorse the proposals that the performance monitoring regime for 2011/2012 focus on delivery of four key performance issues.
- Agree to receive a further report at the next meeting relating to measurement of reductions in Anti-Social Behaviour.
- Discuss and agree a proposed way forward in the measurement of public confidence and reassurance (feelings of safety).

3 BACKGROUND INFORMATION

- 3.1 The end of the performance year at March 2011 represented the final year of Bromley's three year community safety strategy. The strategy was formulated prior to removal of the statutory requirement to undertake a three year crime audit and to agree a three year strategy. This requirement has been replaced by the current process of undertaking an annual Strategic Assessment (incorporating Control Strategy Priorities and Intelligence Requirements) and a six monthly review.
- 3.2 As noted under Item 4 on the Agenda, the majority of targets that were monitored during the period were achieved. In the final year of the Strategy 2010/2011, a reduction of 7.4% in Total Notifiable Offences (a reduction of 1,766 on the previous year).

3.3 Whilst the progress against agreed targets has been both positive and encouraging, the most recent regime is no longer regarded as fit for purpose. The previous regime involved establishing targets against 34 separate indicators, these representing a combination of Nationally imposed indicators, those negotiated with the Government Office for London and those agreed at a local level to reflect priorities. Many of the National Indicators were never developed (e.g. NI36 protection against terrorist attack) and, the election of a new Government in May 2010 saw the deletion of the vast majority of National Indicators. Of particular note is the deletion of the “Place Survey” and, as such, any means of measuring the proportion of residents who state that they feel Bromley is a safe place to live.

3.4 In light of these changes, it is proposed that a new performance monitoring regime is required in order to assess the impact of the Partnership in its objective of making Bromley a Safer place. At the previous meeting of the Partnership, the following Control Strategy Priorities were agreed:

- Crimes against Property
- Violence against Person
- Anti-Social Behaviour
- Public Confidence

3.5 These priorities are reflected in the performance framework established by the Metropolitan Police and, as such, it is proposed that these four indicators form the basis of the future performance management regime for the Safer Bromley Partnership. In relation to the first two priorities, it proposed that targets be set against the indicators of reducing Violent Crime and reducing Property Crime. A summary of the “portfolio” of offences that are included within these overarching targets are provided at Appendix 1. If members are in agreement with the proposal, only the following four targets would be reported on at each meeting of the Strategic Group:

Performance Indicator 1 Reduction in number of violent crimes within Bromley

Performance Indicator 2 Reduction in number of property crimes within Bromley

Performance Indicator 3 Reduction in levels of recorded Anti Social Behaviour

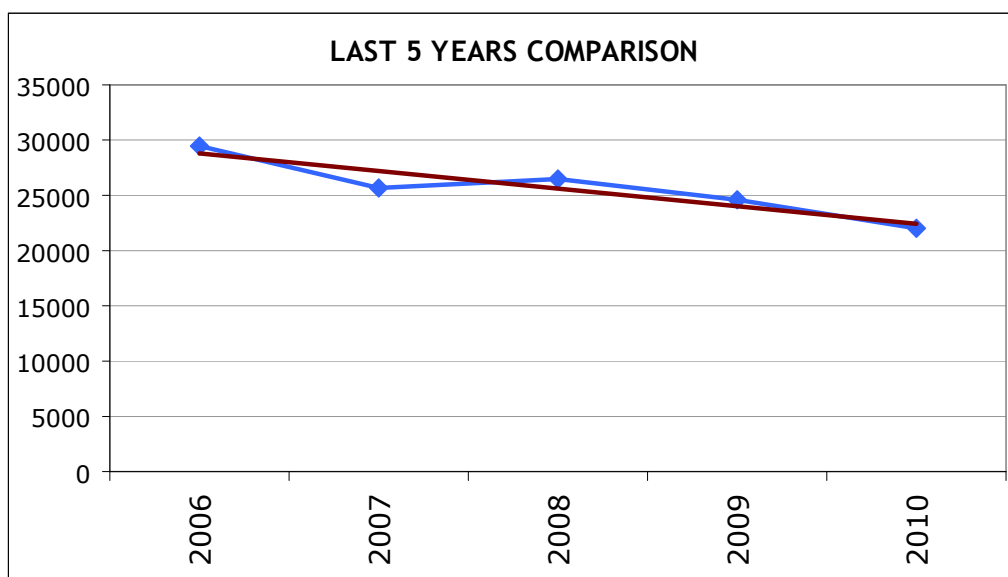
Performance Indicator4 Increased confidence in the fact that Bromley is a safe place

Reporting on individual crime types and detail of individual operations would only be made as a routine if achievement against set targets was not being made or, in some cases, where the measurable rates of individual offences or types of offending were significantly different from expected trends and predicted patterns etc. The management of these operational level issues would be dealt with outside of the Strategic Group at the combined Police/Partnership Tactical Tasking and Coordination Group chaired by the borough Superintendent.

Setting Targets for 2011/2012

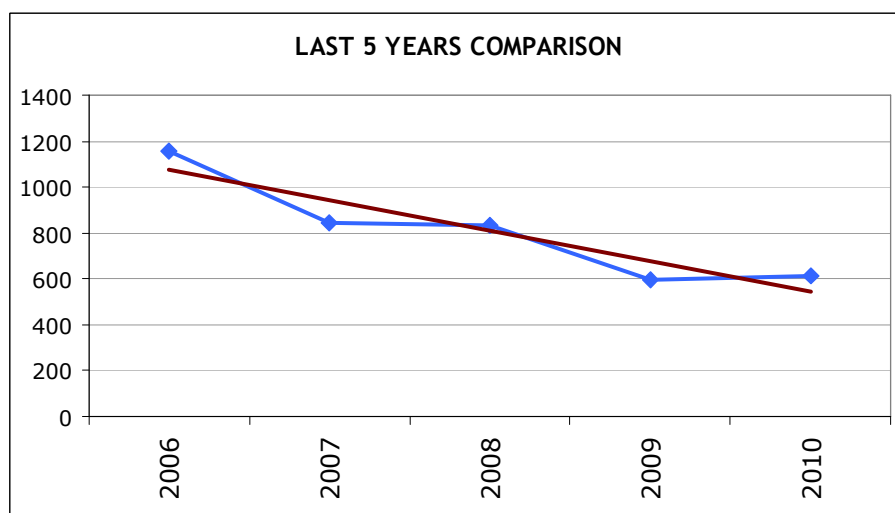
3.6 As already noted elsewhere in this report, significant progress has been made in relation to reducing crime and disorder in Bromley. This is reflected not only in the previous year's performance figures but also over the previous five years and the following charts provide an indication of the downward trends in crime in Bromley over the past five years (January 2006 – December 2010):

Figure 1 – Total Notifiable Offences



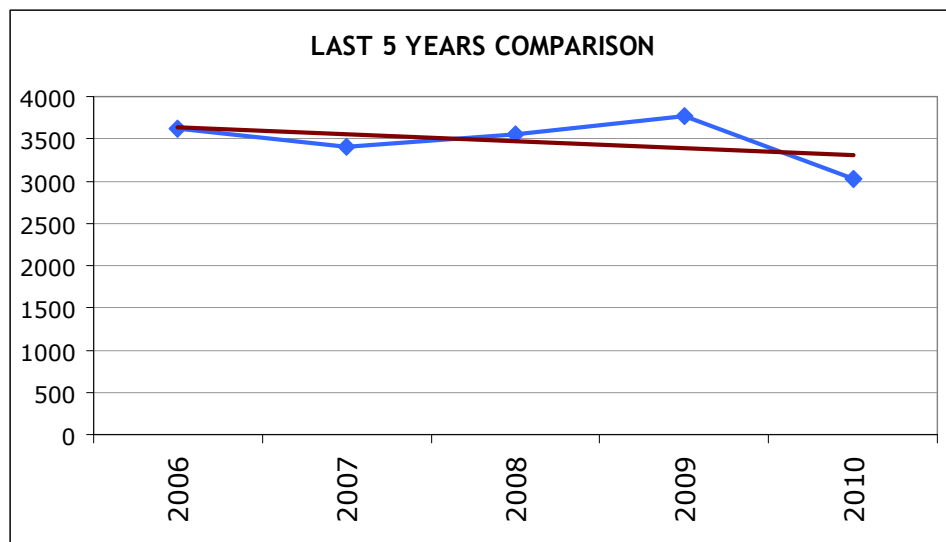
3.7 As can be seen from the figure above, the consistent trend over the past five years in relation to the number of Total Notifiable Offences has been a decline in numbers. This consistent reduction in levels of offending over the previous five years is reflected in a wide range of different crime types, as indicated by the figures below:

Figure 2 - Robbery



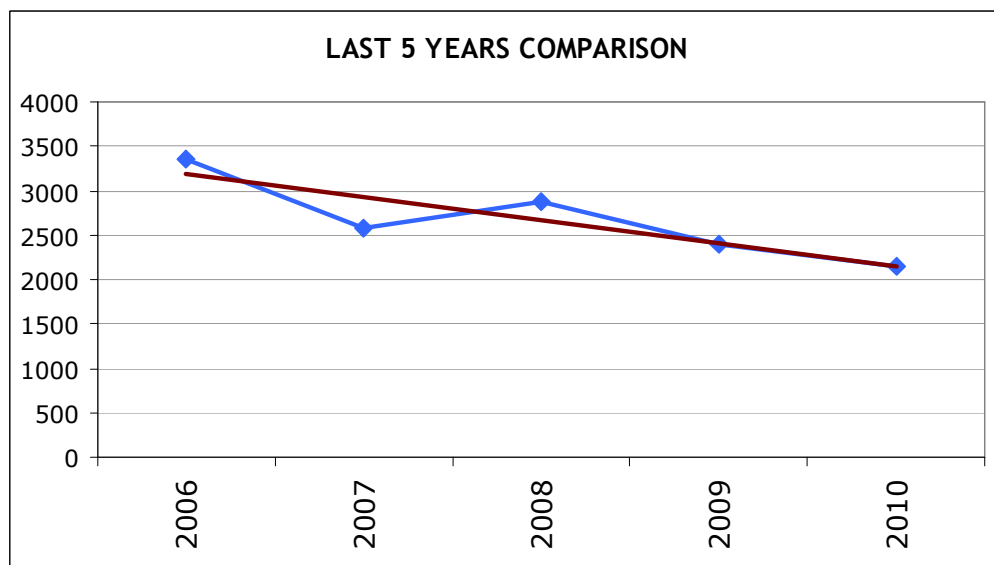
3.8 Robbery represents 2.8% of Total Notifiable Offences in the five year period and the trend over that period is a decline in the number of offences..

Figure 3 - Burglary



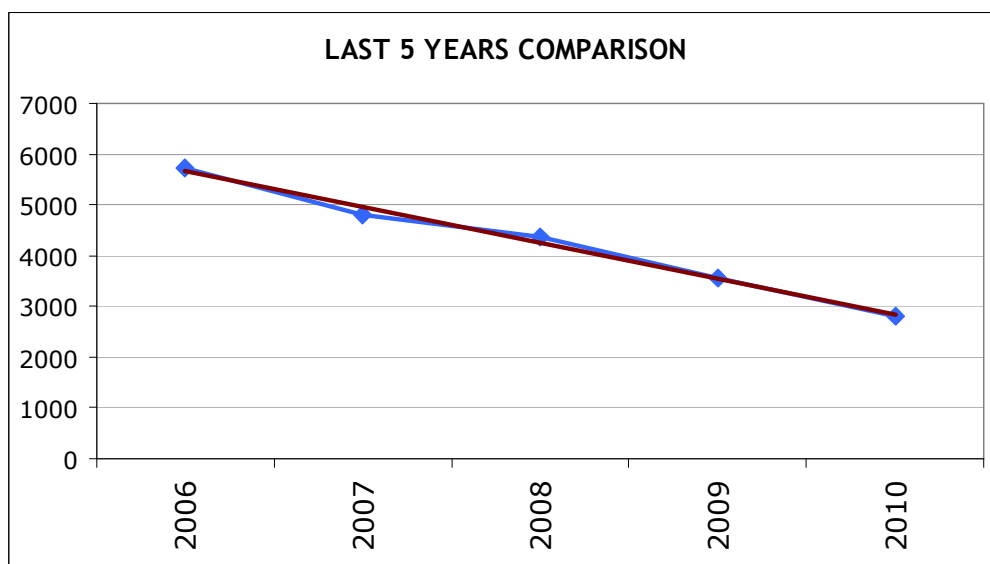
3.9 Offences of Burglary represent 13.8% of the Total Notifiable Offences in the period and, whilst the trend does not indicate as marked a reduction over the period, it does still indicate a reducing level of offences.

Figure 4 – Theft From Motor Vehicle



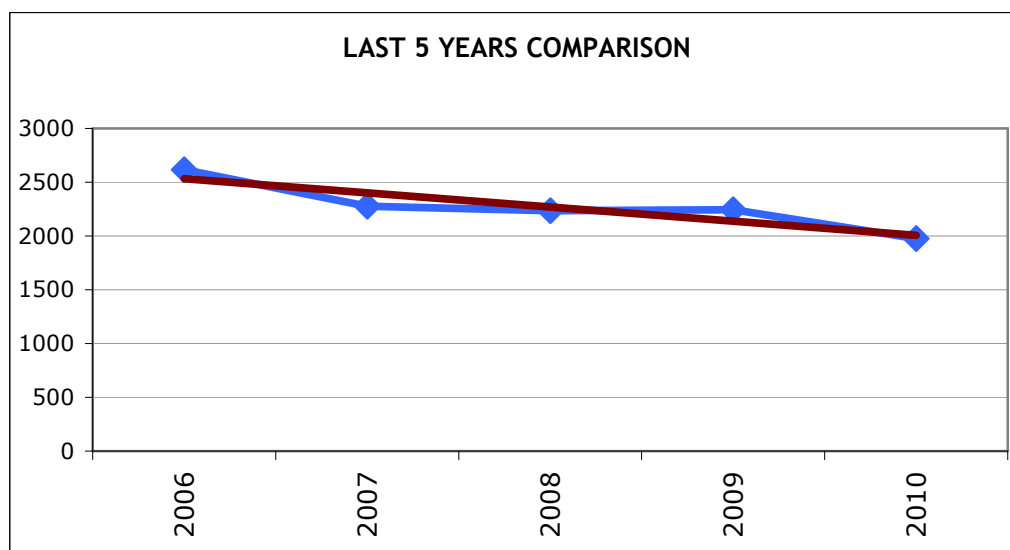
3.10 Theft from Motor Vehicle accounts for 9.8% of Total Notifiable Offences and the five year trend shows a steady decline in numbers of offences.

Figure 5 – Criminal Damage



3.11 Criminal Damage represents 12.8% of Total Notifiable Offences and the five year trend shows a reduction in levels of this crime..

Figure 6: Total Assaults



3.12 Total Assaults (comprising offences of Most Serious Violence and Assault With Injury) account for 9% of the Total Notifiable Offences and also demonstrates a declining trend over the previous five years.

- 3.13 Against a background of these trends, it must be acknowledged that continuing to decrease levels of crime and disorder at the rates previously experienced is difficult to sustain. As such, it is proposed that the Partnership set a relatively modest reduction target in relation to Violent Offences (proposed reduction target is 2%) and Property Offences (proposed reduction target is 1%).
- 3.13 Anti-Social Behaviour – At a London wide level, the work in relation to Anti-Social Behaviour will focus on establishing a baseline for future reduction targets. In Bromley, it is proposed that a more detailed report be presented to the next meeting of the Partnership with an outline of how the Partnership intends to measure levels of Anti-Social Behaviour and ensure progress in making Bromley safer.
- 3.14 Public Confidence/ Feeling Safe – In the past, the “Place Survey” included a suite of questions to members of the public who participated in the survey which related to their feelings of safety and assessment of whether certain behaviours were problematic (drug dealing, drinking, loud and aggressive behaviour etc). In addition, Police public satisfaction surveys have routinely included a question asking respondents to rate how they perceive the Police and Council to be performing. The “Place Survey” has been deleted and there is no proposed replacement at this time. In addition there are no current resources allocated in order to replicate a localised version of such a survey of the views of the public in Bromley. One option would be to rely on the questions asked by the Metropolitan Police Service in relation to satisfaction with Police and Council but this measure only relates to two members of the Partnership and there is a very real possibility that the answers received to that question are influenced by the agency asking them.
- 3.15 The Partnership are asked to consider which options are preferred in relation to measuring levels of public confidence and feelings of safety within the borough.

APPENDIX 1

Performance Indicator Portfolios:

Violence Portfolio	
Offences	Supporting Measures
Violence with Injury	Domestic Violence
Common Assault	Domestic Violence Sanction Detection Rate
Harassment	Domestic Violence Arrest Rate
Threats/ Conspiracy to Kill	Serious Youth Violence
Blackmail	Knife Enabled Crime
Kidnapping/ False Imprisonment	Knife Enabled Crime Sanctioned Det. Rate
	Gun Crime
	Gun Crime Sanctioned Det. Rate
	Most Serious Violence
	Most Serious Violence Sanctioned Det. Rate

Property Portfolio
Offences:
Personal Robbery
Commercial Robbery
Total Robbery
Residential Burglary
Non-Residential Burglary
Theft/Taking Motor Vehicles
Theft From Motor Vehicles
Theft From Shops
Theft From Person
Theft of Pedal Cycles
Other Theft
Criminal Damage

This page is left intentionally blank

Meeting:	Safer Bromley Partnership Strategic Group
Date:	30 June 2011
Subject:	Arson Reduction Plan (2 Attachments)
Author:	Colin Newman, Head of Community Safety colin.newman@bromley.gov.uk

1 SUMMARY

1.1 This report provides a brief introduction to the attached two papers. The first paper, provided by the Borough Commander of the London Fire Brigade in Bromley represents an Arson Reduction Plan for the borough. The second paper is a copy of the report presented to the Council's Public Protection and Safety Policy Development and Scrutiny Committee setting out proposals to enhance partnership working and achieve reductions in Dwelling Fires, Non Domestic Building Fires and Rubbish Fires. In particular, the report outlines proposals that have been made to the Council for the creation of the post of Fire Reduction Officer within the London Borough of Bromley. The proposal seeks the allocation of funding from the Local Area Agreement monies in order to appoint the Officer for a two year period.

2 RECOMMENDATION

2.1 The Strategic Group is asked to

- Note and comment on the contents of the Bromley Arson Reduction Plan.
- Comment on the proposals for creating a Fire Reduction Officer post that are contained within the report from the Public Protection and Safety Policy Development and Scrutiny Committee..

This page is left intentionally blank

**TACKLING ANTI-SOCIAL
DELIBERATE FIRE-SETTING**

Bromley Arson Reduction Strategy 2011



Introduction

The London Fire Brigade's (LFB) Borough Arson Liaison Officer (BALO), in conjunction with the Safer Bromley Partnership's (SBP) Arson sub Group, have produced this document setting out the strategic approach to tackling deliberate fire setting and associated anti-social behaviour in Bromley.

The purpose of this strategy is to ensure that a wide range of agencies work together to reduce the incidence of arson and the broader issue of anti-social behaviour and address the concerns of residents, businesses, the LFB and those individuals who work in and visit the borough.

The main focus of the strategy is to educate all sections of the local community, prevent deliberate fire setting and other anti-social behaviours, to reduce the cost of deliberate fire setting in the borough and to improve the recording of deliberate fire data and the sharing of that data between all relevant crime and disorder reduction agencies by:

- Educating all Bromley stakeholders on arson and how to prevent it
- Improving joint agency working
- Increasing the reporting of arson by all groups in Bromley
- Working with all agencies to reduce opportunities for deliberate fire setting
- Early intervention for youths displaying fire setting tendencies making use of initiatives such as Local Intervention Prison Me No Way (PMNW) and Junior Fire Intervention Scheme (JFIS).

BACKGROUND

Deliberate fire setting continues to impose significant costs on the economy of England and Wales. But where commercial fire losses due to arson are concerned the loss is not simply financial. Deliberate fires can result in deaths and injuries to staff and fire-fighters. They can also result in significant losses for industrial and commercial buildings in terms of lost production, market share and customer goodwill. Even a relatively minor fire at crucial stages of production can mean very large losses for individual firms; business interruption or even closure of the company; lost jobs; and the loss of facilities or amenities for the wider community.

Tackling arson is not just a priority for the Fire and Rescue Service, but across agencies such as the Police, Crown Prosecution Service, Forensic Science Service and others. For this reason the Arson Control Forum was established in 2001 and provides a cross agency approach to reducing arson.

In Bromley, in the year April 2009 to March 2010, there were 165 arson related rubbish fires. Up to date data is available from the Statistical and Performance team within the LFB via a Arson task force report provided on a monthly basis and shared with the partnership. This number of deliberate fires is not only a drain on multi agency resources but also, more importantly, has a significant adverse impact on local communities.

Financial Cost of Arson in Bromley

Table 1 shows the economic cost of deliberate fires per event. The values are based on primary fires (fires involving property that generate a fire report), therefore these figures do not include secondary fires (rubbish, open land or outdoor storage). The costs are based upon average costs across the UK. Individual fires may cost far more or far less than these averages. Also, costs in London may be higher than UK average costs. The costs ignore environmental damage.

Table 1: Cost per case of deliberate fires (based on primary fire data). Source ODPM Economic costs of fire 2004.

	Event Cost per event (2007 prices)
Dwelling deliberate fires	£20,869
Vehicle deliberate fires	£3,575
Rubbish deliberate fires	£2,585

A breakdown of the fires in Bromley in 2009-2010 is shown in table 2 and details that the main types of deliberate fires in Bromley that contribute to our performance are

vehicle fires, rubbish fires and open land fires. It also details the total economic costs according to table 1.

Table 2 – Breakdown of types of fires in 2009-10 and the associated economic cost

Type of fire	Rubbish	Dwelling	Vehicle	Grand Total
Number of fires	165	34	78	277
Economic Cost	£426 525	£709 546	£278 850	£1 414 921

The types of fires shown in table 2 can be directly related to anti social behaviour and the majority can be linked to young people.

Initiatives in Bromley that contribute to arson reduction

Anti fire-setting messages can be delivered through valuable existing routes using established resources, these include:

- Bromley Council
 - Fly Tip removal scheme
 - Abandoned vehicle removal scheme
 - Antisocial behaviour coordinator
 - Promoting Positive Behaviour Strategy
 - Parks and open spaces Community Services Manager
 - Community Wardens
 - Safer Bromley TV
- London Fire Brigade
 - Arson Task Force
 - Prison, Me, No Way (in conjunction with other agencies)
 - Arson Sub Group to the Safer Bromley Partnership
 - JFIS (Junior Fire-setter Intervention Scheme)
 - Schools Team
 - Junior Citizen Events – (in conjunction with other agencies)
 - Summer cigarette public awareness campaign
 - Community Events
 - Borough Arson Liaison Officer (Station Manager)
 - Efit notifications
 - Visual audits
 - Data sharing protocol

- Metropolitan Police
 - Robust investigation of crimes that aim to bring the offenders to justice
 - Junior Citizen Events
 - Borough Crime Prevention Teams
 - Borough Arson Liaison Officer
 - Memorandum of Understanding (MPS & LFB)
 - Schools Officers
 - Safer Neighbourhood Teams

- Probation Service
 - Operation Payback

- Victims Support
 - HFSV partnership
 - Arson Letterbox fitting by Safer Bromley Van

- Housing Associations
 - Attendance at Sub group meetings ,support on request.

Inter Agency Partnerships

- Local Strategic Partnership (LSP) strategy meeting – Quarterly - Borough Commander attends
- Safer Bromley Partnership (SBP) strategy meeting – Quarterly - Borough Commander attends
- SBP tasking meetings – once a month - BALO attends
- Tactical, Tasking, Coordinating Group (TTCG) – twice a month - Police Chair – BALO attends on request.
- SBP Arson Sub group - BALO Chairs
 - Members of the Arson Sub Group are
 - § Council Communications Officer
 - § Borough SNT Coordinator
 - § Police SNT Inspectors (East and West)
 - § Council Parks and Open Spaces
 - § Senior Crime analyst
 - § Affinity Sutton Housing Environmental Officer
 - § Victims Support
 - § SNT's / other agencies on request

Contact details for the above can be found on page 15

OBJECTIVES AND PERFORMANCE INDICATORS

London Fire Brigade has a target of a 10% reduction in rubbish fires year on year.

These are:

	2008/9 Baseline	2009/10 Target	2010/11 Target
Reduction in the number of rubbish fires	315	286	260 244 (stretch)

In addition, the Borough Arson Liaison Officer (BALO) aims to:

- Reduce the cost of arson in Bromley
- Improve the position of Bromley within the LFB London borough groupings
- Reduce the fear of crime in Bromley by reducing ASB and cutting crime

Although the BALO target is to reduce deliberate fires across Bromley as a whole, specific attention will be focused in the following wards, which are the borough's arson hotspots and contribute 60% of the total deliberate fires in Bromley.

- Cray Valley Easy
- Cray Valley West
- Orpington
- Hayes & Coney Hall Ward
- Crystal Palace
- Mottingham & Chislehurst North

With regard to the types of fire to be targeted, specific attention will be paid to Rubbish fires which accounts for 70% of the total deliberate fires in Bromley.

Top 6 wards (total deliberate fires)

Cray Valley East	89
Cray Valley West	39
Crystal Palace	34
Mottingham and Chislehurst North	34
Chislehurst	32
Penge and Cator	29

Borough Comparisons

The statistics below show that, in 2009-10, Bromley has the ninth highest number of deliberate rubbish fire out of the 33 London Boroughs'.

Tower Hamlets	480
Newham	397
Southwark	299
Barking & Dagenham	252
Croydon	230
Greenwich	201
Bexley	169
Hackney	168
Bromley	165

OUR APPROACH TO TACKLING DELIBERATE ANTI SOCIAL FIRE-SETTING

Our approach to reducing arson in Bromley is dependent on focusing efforts on the following four themes: Education; Joint Agency Working; Reducing Opportunity and Tackling Offenders.

The themes in the Arson Reduction strategy are consistent with those themes in the Crime Reduction, Youth Crime and Anti Social Behaviour strategies and focus on community empowerment, information sharing, education and intervention.

It should be noted at this juncture, that this strategy focuses primarily on significantly reducing nuisance arson, which is the biggest cause of deliberate fires in Bromley and where arson reduction initiatives will be most effective. Targeted, malicious arson, which is perpetrated for financial gain or as an act of hatred is sporadic, mercifully infrequent and typically has no trend. General education on installing smoke alarms and responsible refuse disposal can restrict the likelihood of targeted arson, however, the most effective intervention measures in these instances will be provided by the Police or Victim Support.

Process

Education:

By constructing an over arching educational programme aimed at key elements of Bromley's residents, we aim to empower them to make a difference to their own environment. This will be executed by producing literature, teaching aids and presentations and by conducting high visibility campaigning to raise public awareness. Delivery of these messages will be achieved by using existing schemes and routes to audiences.

Key areas of focus will be:

Businesses:

To educate retailers in hotspot areas, to protect themselves from arson and to adopt socially and environmentally responsible retail practices to reduce arson in hotspot areas. Delivery will be achieved through presentations at, for example, Bromley Chamber of Commerce or Arson Prevention Bureau conferences; by working on enforcement with Wardens and Trading Standards; goodwill visits by Fire safety inspectors after fires or when individual issues are raised.

Schools:

To create, supply and promote standard teaching resources for all schools in Bromley that can be reinforced by LFB's own School's Teams visits or via other Agency educational events that demonstrate the consequences of arson. Delivery will be achieved by incorporating anti fire-setting messages into the standard LFB School's Team Fire Safety messages; by creating lesson plans in conjunction with LFB and the Arson Prevention Bureau. Crime awareness days "Prison Me No Way" will be held

through out the school year at targeted schools in wards that ASB and fire setting is high.

Communities:

Raise public awareness and educate all facets (including tenants associations, religious groups, community forums) of Bromley's community on how to minimise the likelihood of arson, how to report arson activity and the social ramifications of arson. Implicit in this activity is the encouragement of active participation in resident's own environments. Delivery to community groups will be achieved by means of presentations at community events; by the production of information leaflets distributed with LBB communications; by regular community visits by fire station personnel.

Agency:

Raising awareness of arson within all major crime reduction partnerships will be achieved by proactively providing all crime reduction partnerships with monthly data on arson, this data will be analysed to highlight arson issues according to the specific agencies criteria. For example arson data has been provided to MPS safer Neighbourhood teams at ward and community council level in order to establish which areas have a problem and to work towards a joint and sustainable approach to tackling the issues.

Joint Agency Working

By identifying and engaging the relevant agencies, associations and existing Crime & Disorder Partnerships in Bromley, to further develop processes to reduce anti-social behaviours.

Intrinsic to the joint agency approach is LFB's commitment to arson reduction. The Borough Commander for Bromley is responsible for the delivery of Fire Brigade response and community fire safety in the borough. The Station Manager BALO has functional responsibility for reducing non-accidental fires in Bromley. Both the Borough Manager and Station Managers are the initial point of contact for the Arson Reduction Officer supported by specific personnel at individual Fire Stations.

The dissemination of information between existing associations, Crime & Disorder Partnerships, LFB, MPS and multiple departments within LBB are key to the success of the arson reduction strategy. This will be achieved by proactively providing all crime reduction partnerships with monthly data on arson, providing this data will allow community councils and other agencies to make informed spending decisions and to allocate appropriate resources if arson is a problem in their area. Regular scheduled meetings to discuss the implications of the data in arson hotspot areas are being organised between all necessary representatives.

In addition, initiatives in conjunction with LBB Housing providers that tackle both prevention and reducing opportunity are being developed. Better control of refuse disposal, refuse chutes and refuse collection through both public awareness and in liaison with LBB refuse and cleansing ultimately seeks to reduce arson by denying fuel and addresses the causes of deliberately started fires rather than the symptoms.

Reduce Opportunity:

In order to reduce the number of deliberately started fires, there are several measures that can be taken to prevent opportunity. These measures may require the redesigning of arson hotspots and may include installing CCTV; additional lighting and ways of prohibiting access to areas such as kissing gates, bollards etc.; using Operation Payback to clear rubbish build up in hotspot areas; use of visual audits to identify potential instances where deliberate fires could occur.

The current priority roads are as follows:-

Star Lane
Chalk Pit Ave
High St Penge
Monks Orchard Road
Elmstead Lane
Lessons Way
Anerley Road
Thicket Road
Main St Biggin Hill
Sandway Road

All measures undertaken to reduce opportunity for deliberate fire setting will be aligned with measures being taken to reduce other ASB's.

Tackling Offenders:

Our strategy recognises that as with most ASB's, arson is typically a precursor for subsequent, more serious behaviours or offences. This strategy aims to prevent arson by working in conjunction with relevant bodies and targeting offenders or potential offenders with diversionary and intervention measures to minimise the likelihood of ASB's being committed. Additionally, we aim to deny potential arsonists of fuel, privacy and open land as a means of reducing opportunity for deliberate fire setting. We also seek to encourage referrals to early intervention schemes such as LFB's or JFIS programmes or multi agency schemes such as the Prison, Me, No Way Scheme. Other referrals schemes such as the Motor Project being developed by LBB can help to divert local youths from committing ASB's and instead learn valuable skills.

Liaising closely with MPS, the Arson Reduction Officer and BALO will work to ensure that ASBO's are issued to those individuals caught deliberately starting fires. Additionally, the ARO, BALO and Youth Offending Teams (YOT) is working to encourage the compulsory attendance at an intervention programme as part of an offender's reparation. Schemes such as "Prison, Me, No Way" have proven effective in lowering re-offending rates.

Communications

Resulting from the implementation of the above 4 themes, it is envisaged that a robust communications programme will be required to focus attention on arson in Bromley.

In order to maximise the impact of this strategy's proposals, we need to disseminate the "zero tolerance" message across the whole community. That includes all schools, businesses, relevant agencies and Crime & Disorder Partnerships.

Essential messages that need to be publicised are:

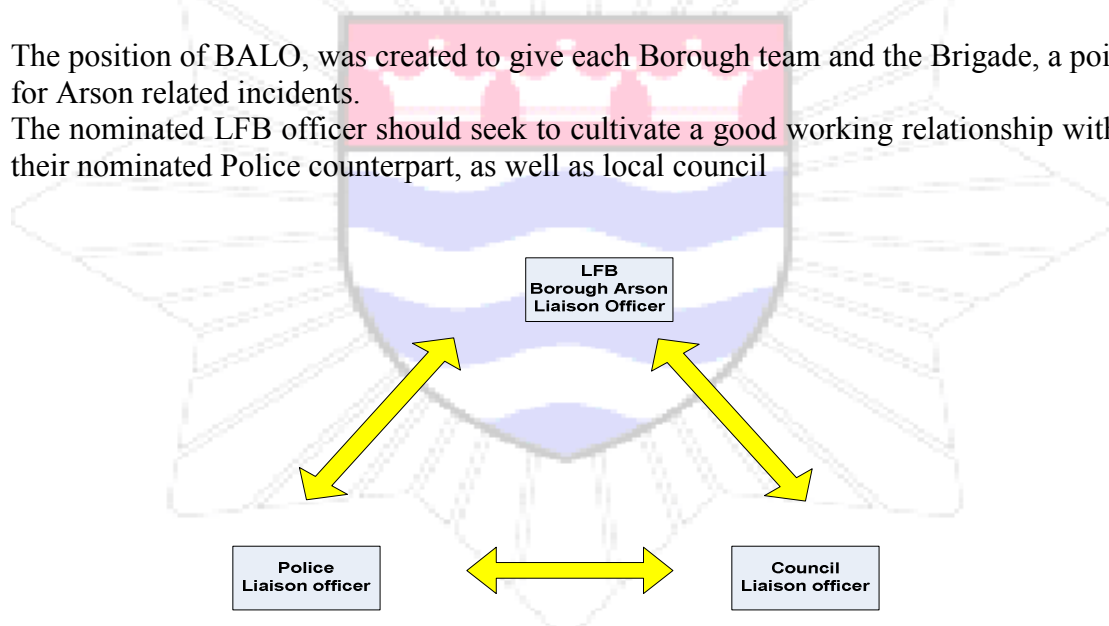
- How to report arson or any other ASB
- What arson / ASB reduction initiatives we are conducting
- What arson / ASB reduction successes exist
- Further promote LFB's Fire Safety & Anti Fire-Setting messages
- Educate Bromley residents on how to reduce likelihood of arson
- Encourage feedback from the Bromley residents

A data sharing protocol has also been established whereby agencies can share information regarding instances of arson. This includes daily Efit notifications and monthly LFB arson reports.

Role of the LFB's Borough Arson Liaison Officer

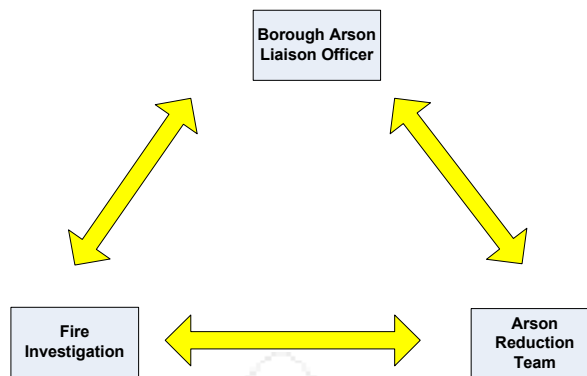
The position of BALO, was created to give each Borough team and the Brigade, a point of contact for Arson related incidents.

The nominated LFB officer should seek to cultivate a good working relationship with their nominated Police counterpart, as well as local council



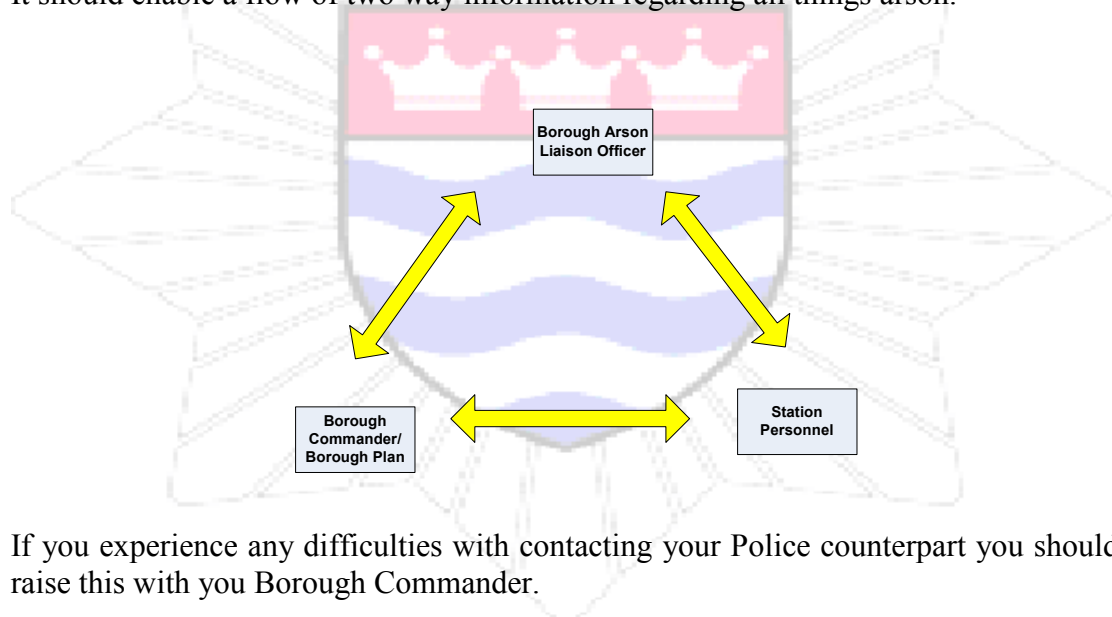
The above is the basis of the role
This should enable the exchange of information and intelligence.
This can then be fed back into the Borough Plan for action

Arson Task Force Practitioner (if you have one) & Fire Investigation



This then gives the Brigade a point of reference when raising questions or enquiries about events, incidents or investigations.

It should enable a flow of two way information regarding all things arson.



If you experience any difficulties with contacting your Police counterpart you should raise this with you Borough Commander.

You may be consulted or informed of incidents or events, either from authority personnel or external agencies, including the Police, information which you can then pass on the various groups within the Brigade who are seeking to reduce arson related incidents, these include the Arson Task Force, Junior Fire setters Intervention Scheme, Fire Investigation as well as station based personnel, or if required, onto the other agencies

An example: Reacting to an Arson incident, utilising contacts, develop an action plan, initiate, evaluate and revise. This could involve rubbish clearance, premises securing, education, local liaison etc.

As BALO you should consider the following:

- Informing stations & teams of your role and how to contact you.
- Prevention, community education, safer citizens, etc
- Target Hardening, providing advice on how to avoid being a victim of arson
- Fuel Management, if there is no fuel, it's harder to start a fire
- Education, advice people on how to reduce the risk
- Identify at risk groups.
- What can we do to Reach, Inform, and Educate & Engage them?
- What is in place, to protect them?
- What could be done, i.e. HFSC, smoke alarm
- What is in the Borough plan?
- Does it need to be updated/amended to reflect patterns & trends?

The role also involves attending meetings with the police, at which Borough Crime targets are discussed, these usually revolve around the likes of Murder, rape, burglary, violent crime working there way through to arson.

The best thing is to build a working relationship with your police counterpart.

As well as this, getting involved with the local authority's action plan, attending meetings networking etc.

Its worth remembering that both the Brigade and the Police have an obligation to enter into partnerships to reduce arson.

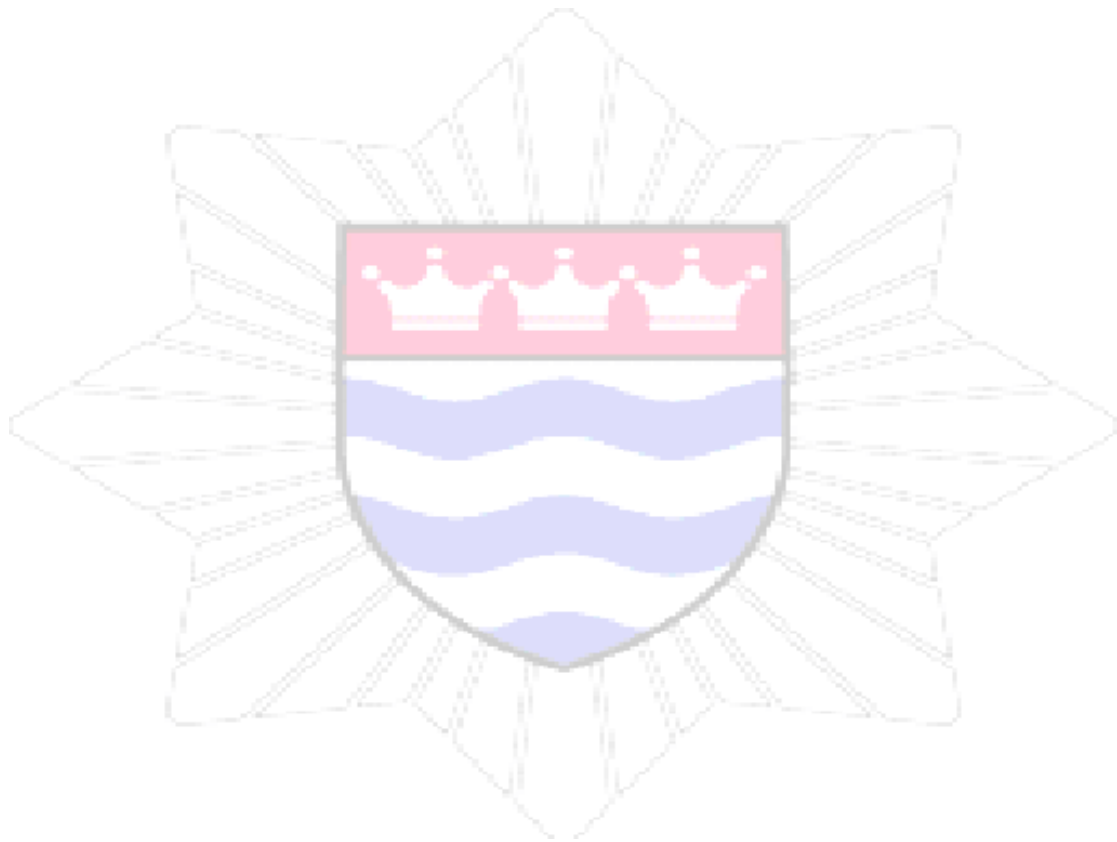
The Police Reform Act 2002, places a duty on Fire & Rescue Authorities, working with police and local authorities in Crime & Disorder Reduction Partnerships, to identify crime and disorder problems and to develop and implement a strategy to tackle them

Always keep a copy of the LFEPA, **FIRE & ARSON INVESTIGATION**, "**Memorandum of Understanding**" with you, it explains the role of the relevant parties.

MOU link:

http://hotwire/operations/cfs/Arson_reduction/media/MOU.doc

Sent as additional attachment to external partner



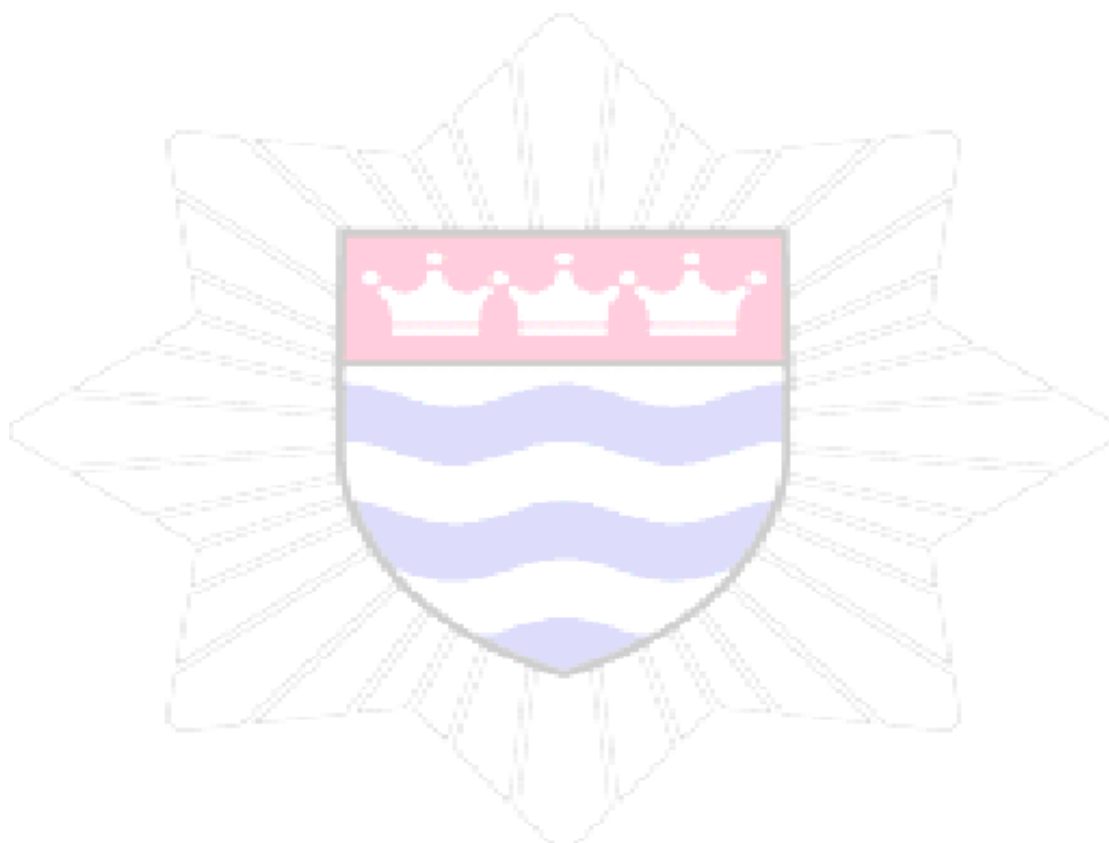
Bromley BALO tasks

When Necessary	
JFIS referrals	Coordinate instances of fire setting behaviour by youths and liaise preventative initiatives with other agencies
Efit notifications	Automatically generated notifications sent to partners and analysed by BALO for trends.
Weekly	
Victim Support referrals	Analyse Victim Support referrals to see any that have been affected by arson. Check the LFB's attendance and investigate via the safer neighbourhood team if necessary.
Daily Internal Business sheet	Analyse for any incidents in the borough and any action from them
Monthly	
Performance management Arson data	Analyse monthly reports and distribute via email to all Arson Sub Group members, Station and Group Managers stating trends and points for action
Arson Sub Group	Organise and Chair according to issues at the time. Update and distribute action plan after each meeting
Safer Bromley Partnership Tasking meeting	Normally held at the Civic Centre 10am on the last Wednesday of each month. Summarise outcomes of Arson Sub Group meeting
Police Tactical, Tasking coordinating group (TTCG)	Held every two weeks on Wednesday afternoon's (2.30pm) at Bromley Police station. Provide input or advice from any police arson initiatives. Attendance of BALO on request.
Borough Management meeting	Update Borough Commander and other Station Managers any outcome of arson initiatives
Quarterly	
Performance management Arson data	Analyse Quarterly reports and distribute via email to all Arson Sub Group members, Station and Group Managers stating trends and points for action. Compare statistics against targets and liaise with Borough Commander
Visual audits	Analyse data and align visual audits accordingly
Annually	
Performance management Arson data	Analyse annual reports and compare against previous years figures and headline targets. Distribute via email to all Arson Sub Group members, Station and Group Managers stating trends and points for action. Include in the email lists of worst six wards for total fires and worst wards for each type of fire (Open land, vehicle, rubbish etc...) Liaise with Borough Commander regarding comparison with Borough Plan and revise arson reduction strategy.

Borough Contacts

Role	Name	email	phone
LFB BALO	Station Manager Terry Gooding	Terry.gooding@london-fire.gov.uk	020 8555 1200 x 32626 07810850744
Arson Task force Practitioner	George Laing	George.laing@london-fire.gov.uk	07795542440
Police Borough Arson Liaison Officer	Chief Inspector Chris Smart	Chris.Smart1@met.pnn.police.uk	07884234473
Police Borough Intelligence Unit Manager	Chief Inspector Dave Telford	Dave.Telford@met.pnn.police.uk	02087214510 07771506375
Police SNT	Chief Inspectors Carron Schusler	Carron.schusler@met.pnn.police.uk	0208284 9955
Police SNT Inspector South West	Inspector Kevin Smith	Kevin.R.Smith@met.pnn.police.uk	0208284 8023 07879 487127
Police SNT Inspector North West	Inspector Tony Nickalls	Anthony.Nickalls@met.pnn.police.uk	0208284 8901 07920 207 120
Police SNT Inspector South East	Inspector Martin Hills	Martin.hills@met.pnn.police.uk	02082848023 07876216238
Police SNT Inspector North West	Inspector Darren Murphy	Darren.Murphy@met.pnn.police.uk	02082848768 07803123631
Borough Senior Crime analyst	Vacant		07866676 414 07852 768617
Head of Community Safety Bromley Council	Colin Newman	Colin.Newman@bromley.gov.uk	02084617915 07958336223
Borough SNT Coordinator	Sue McVicker	'Sue.mcvicker@bromley.gov.uk'	07958745613
Council Parks	Toby Smith	'Toby.smith@bromley.gov.uk'	07904169360
Council Street Services	Peter Turvey	Peter.turvey@bromley.gov.uk	02083134901
	Janine Pethig	Janine.pethig@bromley.gov.uk	02084617867 07939537583
Council anti Social	Peter Sibley	Peter.Sibley@bromley.gov.uk	07951006350

Behaviour Coordinator			
Broomleigh Housing Association Environmental Manager	Andy Goddard	'Andy.goddard@affinitysutton.com	07803512609
Council Communications Officer	Suzie Clarke	Susie.Clark@bromley.gov.uk	07889607080
Victims Support	Cora Green	Cora.Green@vslondon.org	02087767071 07746857074



This page is left intentionally blank

PART 1 - PUBLIC

<Please select>

Decision Maker: Public Protection and Safety Policy Development and Scrutiny Committee

Date: 28 June 2011

Decision Type: Non-Urgent Non-Executive Non-Key

Title: FIRE RISK REDUCTION OFFICER PROPOSAL

Contact Officer: Colin Newman, Head of Community Safety
Tel: 020 8461 7915 E-mail: colin.newman@bromley.gov.uk

Chief Officer: Nigel Davies, Director, Environmental Services Department

Ward: Borough Wide

1. Reason for report

This report sets out proposals for the creation of the post of Fire Reduction Officer within the London Borough of Bromley. The proposal seeks the allocation of funding from the LAA monies in order to appoint the Officer for a two year period. The project seeks to enhance partnership working and achieve reductions in Dwelling Fires, Non Domestic Building Fires and Rubbish Fires.

2. **RECOMMENDATION(S)**

2.1 The Policy Development and Scrutiny Committee is asked to comment on the proposals contained within this report and the presentation given by the London Fire Brigade Borough Commander.

2.2 The Portfolio Holder is asked to:

Request the Executive to consider the release of £15,000 from the LAA monies to provide funding for a Fire Risk Reduction Officer for a two year period commencing in September 2011.

Corporate Policy

1. Policy Status: N/A.
 2. BBB Priority: Safer Bromley.
-

Financial

1. Cost of proposal: Estimated cost £15,000 over 2 years
 2. Ongoing costs: N/A.
 3. Budget head/performance centre: LAA Reward Monies
 4. Total current budget for this head: £
 5. Source of funding: LAA Reward Monies
-

Staff

1. Number of staff (current and additional): 1
 2. If from existing staff resources, number of staff hours: N/A
-

Legal

1. Legal Requirement: No statutory requirement or Government guidance.
 2. Call-in: Call-in is not applicable.
-

Customer Impact

1. Estimated number of users/beneficiaries (current and projected): Borough Wide
-

Ward Councillor Views

1. Have Ward Councillors been asked for comments? N/A.
2. Summary of Ward Councillors comments: N/A

3. COMMENTARY

- 3.1 This report represents a proposal for the employment of a dedicated Fire Risk Reduction Officer and is based on the contribution that would be made to the strategic aims and objectives of the Safer Bromley Partnership, and the outcomes of Building a Better Bromley.
- 3.2 Arson is a complex issue with a variety of causes varying from vandalism, playing with fire and crime concealment to revenge, fraud and mental illness. Over the last decade the number of fires started by arsonists has doubled. This is why the London Fire and Emergency Planning Authority's (LFEPA) prevention activities specifically include work targeted at reducing arson and work with young people up to the age of eighteen who have been identified as starting deliberate fires. One of the major motivations for this work is the fact that arson attacks and thousands of small arson fires each year have a huge cost in terms of human suffering, and reduction in quality of life quite apart from their direct economic impact. The average total cost of all deliberate fire is over £5,520, the average cost of all deliberate primary fires (excl. vehicles) is £26,140 and the average cost of a vehicle fire is over £4,660 and a deliberate outdoor secondary fire is £1,970. Estimates for deliberate fires tend to be slightly higher than estimates for fires due to the assumption that the damage to property is more widespread as well as additional costs incurred by the criminal justice system.
- 3.3 In Bromley the total number of recorded deliberate fires in 2010/2011 was 505. Bromley has, on average, 11 deliberate fires a week, with the trend showing peaks around the hotter summer months and times when school holidays occur. An example of this can be seen in the month of April 2011 where the borough experienced 76 deliberate fires compared with 12 the previous year.
- 3.4 As the last British Crime survey suggests that 78% of fires go unreported, it is acknowledged that the totals of deliberate fires for the Borough could actually be considerably higher. The cost of deliberate fires is significant both in terms of the economic cost and the costs associated with emotional and community impact of such fires. Nationally, on average it takes 14 days to clear a burnt out vehicle. 90 days to repair a damaged building and 30 days to replace a damaged litter bin. During this period the local residents will have endured the mess and the sight of the burnt out property. Such experiences can contribute to the growth in feeling that an area has become run down then and prone to criminal activity.
- 3.5 In a bid to tackle the economic and community harm caused by deliberate fires, the Borough Commander in Bromley has proposed that a project be initiated, requiring the recruitment of a Fire Risk Reduction Officer. The outline of the project is set out below:

Project Aim

To reduce the number and impact of deliberate fires in the borough of Bromley, whereby creating a safer and community for all to live and work.

Scheme Outline

The core of this project is to introduce the post of Fire Risk Reduction Officer into the Borough by September 2011. The Officer would report to the Multi-agency Arson Sub Group and work towards finding sustainable solutions to reduce the number of non-accidental fires within Bromley. Specifically, the aims of the Officer will be to achieve significant progress against the following objectives.

Scheme Objectives

- Reduce and prevent young people from committing arson
- Reduce the fear of arson within communities

- To identify and target Priority Neighbourhoods within the Borough
- Ensure strengthened partnerships with Youth Engagement Projects and the Police to enable a joint approach to tackling anti-social behaviour related to fire activity.
- Raise awareness of arson issues, at Borough level and externally with the community, including the business community
- Reduce anti-social fire setting - specifically targeting refuse chambers, street refuse, street furniture, skip and wheelie bin fires
- Reduce vehicle fires - both primary fires (stolen and fraudulent insurance claim) and secondary fires (abandoned vehicles)
- Assist the co-ordination between partner organisations and the London Fire Brigade with their existing schemes that are working towards reducing the risk from fire to Bromley residents

Measurable Outcomes

It would be part of the Officer's duties to collate the statistics that are available and report on trends and outcomes. This should be a transparent process and the Fire Brigade already collects large amounts of data as to the causes and numbers of incidents. The proposed reduction in types of deliberate and unknown cause fires is set out in the table below:

Local Indicator	Title	2011/2012	2012/2013
LI 1	Dwelling fires (Primary all motive) -	156	149
LI 20	Non-domestic building fires - all	83	82
LI 4	Rubbish fires (deliberate and unknown)	260	240

These forecasted reductions will be monitored monthly through the existing LFEPA borough reporting scorecard methodology and shared with the Council through existing data sharing protocols.

4. POLICY IMPLICATIONS

- 4.1 Reducing crime and disorder, providing reassurance and making Bromley safer are key elements of both Building a Better Bromley and the Safer Bromley Partnership's Community Safety Strategy. The prevention of fires and speedy repair of damaged cars, road furniture, buildings etc. greatly enhances the public view of their own environment and reduces the fear of crime.
- 4.2 There are a number of schemes led by the Fire Brigade in Tyne and Wear, Nottingham and South Wales that have demonstrated good practice in relation to the objective of arson reduction. Evidence from these schemes can be used as best practice in developing the programme in Bromley. Such evidence from other areas demonstrates that the local area became a great deal tidier with the speedy removal of abandoned vehicles and rubbish from the streets. In Tyne and Wear there was a 23% drop in arson in the targeted areas over the 12 month period of the scheme.

5. FINANCIAL IMPLICATIONS

- 5.1 In relation to the Local Area Agreement funding, the previous project to reduce the number of deliberate fires in the borough on target, thus generating a reward grant to the Local Authority of £15,000. The Portfolio is asked to suggest to the Executive that they consider granting permission for the draw down of funding as set out in this report in support of the ongoing funding of the Fire Risk reduction Officer fro a two year period from September 2011.
- 5.2 The officer would be supported by LFEPA in a number of ways, representing significant “in kind” contributions from that agency. The officer’s day to day management, office accommodation and their health, safety and welfare will be managed by officers based with Bromley borough’s fire management team. The officer will also have access to the various IT systems to support their analysis and investigation of arson data. This will require on the job coaching as well as ad-hoc attendance at both training events and seminars delivered by LFEPA.

6. PERSONNEL IMPLICATIONS

- 6.1 If the proposal to release funding for the employment of a Fire Risk Reduction Officer is approved, the appropriate assessment, grading and recruitment of the post will be undertaken in line with the policies of the London Borough of Bromley.

Non-Applicable Sections:	Legal Implications
Background Documents: (Access via Contact Officer)	N/A

This page is left intentionally blank

SERVICE LEVEL AGREEMENT – 2011/12 PROJECTED WORK PLAN

Milestones and Key Deliverables:

Milestone 1 Qtr (April – June 2011)

20 April Executive Meeting
 Meetings with the Borough Commander/BCEF Chair, every month
 26 April Community Outreach Day
 9 May Public Meeting (Role of Street Pastors / Licensing Team)
 Publicising the role of Street Pastors
 Meetings regarding additional Youth Conference for Specialist Schools
 Publicise concerns of disabled young people
 Meetings with potential volunteers for BCEF Executive
 7 June Executive Meeting
 9 June, Launch of Operation School Bike, Charles Darwin School
 15 June – Support to Snow Conference
 20 June Links AGM
 28 June, Public Protection & Safety meeting
 30 June, Safer Bromley Partnership meeting
 30 June Youth Engagement Workshop (Lambeth)
 Multi faith work
 Preparation Annual Report
 Commission's Chairs' Forum, New Scotland Yard
 Quarterly Coordinators Forum
 Updating of BCEF website updates
 Issue Press Releases
 Circulate MPA communication.
 Support to Safer Neighbourhood Panels
 Working with the police to improve community engagement and confidence in policing.

Milestone 2 Qtr (July – September 2011)

6 July AGM/Public Meeting – election of BCEF Executive committee
 Meetings with the Borough Commander/BCEF Chair, every month
 7 July LCP chairs/AGM
 14 July Co-ordinators Meeting
 19 July Executive Committee meeting
 26 July, Public Protection & Safety meeting
 1 Sept Commission's Chairs' Forum, New Scotland Yard
 20 Sept Public Protection & Safety
 21 Sept, Domestic Abuse Awareness Training
 22 Sept, Safer Bromley Partnership
 Biggin Hill Youth Day (awaiting date/confirmation for September)

September Outreach Day
 Older Person campaign
 Planning for Youth conference in March 2012
 Planning for Specialist Schools Youth Conference
 Working with the police to improve community engagement and confidence in policing.

Quarterly Commission's Chairs' Forum, New Scotland Yard
Quarterly Coordinators Forum
Updating of BCEF website updates
Issue Press Releases
Circulate MPA communication
Support to Safer Neighbourhood Panels

Milestone 3 Qtr (October 2011 – December 2011)

October Executive meeting
Meetings with the Borough Commander/BCEF Chair, every month
25 Oct, Public Protection & Safety
November Public Meeting
13 Oct, Co-ordinators Meeting
3 Nov, LCP2 Chairs Meeting
22 Nov Public Protection & Safety
8 Dec, Commission's Chairs' Forum, New Scotland Yard
15 Dec, Safer Bromley Partnership
Christmas Campaign (keep safe on public transport)
Youth Conference planning for March
Specialist Schools Youth Conference.
Safer Neighbourhood Panel workshop
Homeless project
Quarterly Coordinators Forum
Updating of BCEF website updates
Issue Press Releases
Circulate MPA communication
Support to Safer Neighbourhood Panels

Milestone 4 Qtr (January – March 2012)

January Outreach Day
Meetings with the Borough Commander/BCEF Chair, every month
January Executive meeting
12 Jan, Co-ordinators Meeting
24 Jan Public Protection & Safety
2 Feb Commission's Chairs' Forum, New Scotland Yard
March Youth Conference
February Safer Neighbourhood Panel Chair Workshop
22 March, Safer Bromley Partnership

March Public Meeting
March Executive Meeting
Continue with Multi Faith work
Updating of BCEF website updates
Issue Press Releases
Circulate MPA communication
Support to Safer Neighbourhood Panels
Support Safer Neighbourhood Panels to engage with local communities to identify strategic issues.

Meeting:	Safer Bromley Partnership Strategic Group
Date:	30 June 2011
Subject:	Bromley Community Engagement Forum – Outreach Day
Author:	Colin Newman, Head of Community Safety colin.newman@bromley.gov.uk

1 SUMMARY

- 1.1 This report introduces the findings of the most recent Outreach Day held in the Glades Shopping centre, held on Tuesday 26 April 2011.

2 RECOMMENDATION

- 2.1 The Strategic Group is asked to
- Note the findings of the survey undertaken as part of the BCEF Outreach day.
 - Recommend that work to address concerns raised relating to “cold calling” is taken on board in line with the Portfolio Holder’s priorities for 2011/2012.

3 BACKGROUND INFORMATION

- 3.1 On Tuesday 26 April, the BCEF undertook a community outreach day in the Glades Shopping Centre. The Safer Transport Team, Safer Neighbourhood Officer and Bromley’s Immigration Team worked with Forum volunteers throughout the Day and were able to answer the public’s queries and discussed any concerns. In addition, members of the public were invited to complete a brief questionnaire about their perceptions of crime and disorder issues in the borough. A total of 125 surveys were completed.
- 3.2 There was much praise for Police teams and the work that has been done to address anti social behaviour problems. The figures show that the public’s perception that crime on buses has fallen and people generally feel safer travelling on buses in the borough. Passengers travelling on bus route 208 in particular, which was previously subject to much public concern, praised the Safer Transport Team and stated that they felt safe during the day. It is noted that this has the first Outreach Day where ‘cold callers’ has been identified as a public issue on this borough. An outline of the survey responses is provided overleaf:

Q1 What affects your feeling of safety most?

- Drug Abuse **30%** (38)
- Anti Social Behaviour **26%** (32)
- Vandalism **10%** (12)
- Speeding Cars **18%** (22)
- Car Crime **10%** (12)
- Burglary **34%** (42)
- Other:
 - Mugging **10%** (13)
 - None, feel safe in Bromley **20%** (25)
 - None, feel safe in Bromley during the day, but not at night **36%** (45)
 - Cold callers **18%** (22)

Q2 Is Anti Social Behaviour (ASB) a problem in this Borough?

- Yes **36%** (45)
- No **64%** (80)

Q3 Do you feel the Police and Council understand local concerns about ASB?

- Yes **70%** (87)
- No **30%** (38)

Q4 Do you feel safe using public transport?

- Yes **81%** (101)
- No **19%** (24(safe during the day, but not at night))

Q5 Do you feel Bromley is a safe place to live?

- Yes **70%** (88)
- No **30%** (37)

Q6 Do you live in the borough of Bromley?

- Yes **75%** (94)
- No **25%** (31)

Q7 If you had a choice, what problem area would you like the Police/Council to deal with?

- ASB **8%** (10)
- Drunkenness **10%** (12)

- Late night noise
- Drugs **19%** (24)
- Stop cold callers **16%** (20)
- Better street lighting in Biggin Hill area **2%** (2)

Respondent Demographics:

Age range:

Under 18 x 6

18 – 25 x 2

26 – 35 x 8

36 – 50 x 25

51 – 60 x 38

60 and over x 41

Ethnicity:

White/British x 45

Chinese x 2

Black/Black British x 11

Asian/Pakistani x 4

This page is left intentionally blank

Safer Bromley News

The Safer Bromley Partnership is recognised as one of the best crime reduction partnerships in London with the joint work of partners behind the scenes achieving some notable successes over the years. However, the work of the partnership is not always fully understood by those who are not involved first hand.

In order to address the need for more understanding of what the Partnership does and to share the best practice and successes that consistently contribute to Bromley being one of the safest boroughs in London, the Partnership is delighted to announce that it is launching an e-communication. This will be circulated electronically and provides a good opportunity for partners to raise awareness of their work to keep Bromley a safe and pleasant place to live, work and relax.

Safer Bromley News will be:

- Two pages sent electronically
- News with links to the web
- Distributed to councillors, partners, residents' associations, media
- Initially seasonally
- Linked to PDS priorities
- Print on demand.

Launch edition

Summer

June/July 2011

This will include a column featuring Cllr Stevens outlining his priorities for the year as Chairman of the Safer Bromley Partnership, plus other news and a feature on Trading Standards

Further plans include:

Autumn

September/October

News: Dark nights/Halloween

Feature ASB

Copy deadline: 17 August

Winter

December/January

News: tbc

Feature: Protecting older people

Copy deadline: 16 November

Spring

March/April

News tbc

Feature: tbc

Copy deadline: 16 February 2012

Please send story suggestions to Susie Clark

susie.clark@bromley.gov.uk 0208 461 7911

This page is left intentionally blank



Bromley Community Engagement Forum

PO Box 34 Beckenham Kent BR3 4ZN Telephone/Fax: 020 8658 7168

E-mail: info@bcef.org.uk Website: www.bcef.org.uk

Company Limited by Guarantee Number 7070498 Registered Charity Number 1133450

MINUTES OF A PUBLIC MEETING HELD ON MONDAY 9 MAY 2011, 7PM BROMLEY FOOTBALL CLUB

BCEF MEMBERS PRESENT (SNP = Safer Neighbourhood Panel)

Judith Cross (BCEF Chair)

Mahmood (BCEF Executive; Multi Faith)

Brenda Thompson (BCEF Executive, Mental Health Forum, Cray Valley East SNP)

Michael Lever (BCEF Executive and Bromley Residents Federation)

Dave Freeborn (Co-opted BCEF Exec member)

Bruce Tompson (Co-opted BCEF Exec member & West Wickham SNP)

Nell Riehl (Honorary Member & Hayes/Coney Hall SNP)

Cora Green (Bromley Victim Support)

Roger Taylor (Honorary Member)

Peter Toy (ClockHouse SNP & Crystal Palace SNP)

Terry Belcher (Bromley Link)

David Ely (Chislehurst SNP)

Bernard Waine (Darwin SNP)

Ian Smith (Honorary Member & Plaistor & Sundridge SNP)

Ray Bell (Orpington SNP)

Ed Cobby (Chelsfield & Pratts Bottom SNP)

Sandie McGarey (Bromley Women's Aid)

John Bruce (Bickley SNP)

Steve Dilworth (Bromley Town SNP)

Derrick Palmer (Bromley Neighbourhood Watch Association)

Sarah Walker (MPA)

Amanda Evans (BCEF Operations Manager)

SAFER BROMLEY PARTNERSHIP STRATEGIC GROUP MEMBERS PRESENT:

Charles Griggs (Police, Borough Commander)

James Cleverly (Metropolitan Police Authority/London Assembly)

Nigel Davies (LBB Council)

Paula Morrison (Bromley PCT)

Colin Newman (Community Safety)

Elaine King (Affinity Sutton)

Also Present: Joy Lever, Paul Lehane (Public Protection LBB, Licensing), Rachel Evans, Monica Fowler (Beechwood RA), David House (St Mary Cray East NW), Chris Beckley (WCRA), J. Andrews, Jacqui Giles (Mountview & Perry Hall RA), Nerisa Henderson, Derrick Ditchman, Jennifer Guiver, John Verrinder (Bromley Link), Stephen Blann (Community Links), Jonathan Williams, Jennifer Gordon & Simon

Redfern (UKBA), Peter Buckland (Bickley SNP), Cllr Peter Fookes, Cllr Katherine Bance.

MEMBERS APOLOGIES FOR ABSENCE: Lulu Pearce (Community Advisory Group), Val Harrison (Kelsey & Eden Park SNP), Norman Dix (Cray Valley West SNP), Margaret Gubbins (ICV), Alf Kennedy (Neighbourhood Watch), Mike Larking (Petts Wood SNP), Derek Holl (Bromley Common & Keston SNP), Laurie Bell (Mottingham & Chislehurst North SNP), Ali Hussain (Somalian Community), Julian Melfi (Copers Cope SNP)
Strategic Apologies: Peter Morgan (LBB Council), Andrew Holcombe (Fire), Howard Oldstein (Glades Management), Tracy Pidgeon (Ambulance), Rob Clark (Probation),

No apologies/representation for: Biggin Hill SNP, Farnborough & Crofton SNP, Penge/Anerley SNP, Shortlands SNP, LGBT, Penge Partners.

1. **CHAIRMAN'S WELCOME AND INTRODUCTION:** Judith Cross explained the purpose of the meeting and introduced the Partnership members.
2. **BROMLEY'S LICENSING TEAM:** Presented by Paul Lehane, Head of Food Safety, Occupational Safety and Licensing at Bromley. Paul explained the process and responsibilities of the Team, mentioned below. He added that in relation to public's objections, it is important for you to gather evidence and if no objections are received, then the Council must grant the license!

Democratic Control:

- The Licensing function is the responsibility of the General Purposes and Licensing Committee (15 Members)
- Licensing Sub Committees (3 Members) – hearings
- Licensing also impacts on the delivery of the Public Protection & Community Safety Portfolio Plan.

Basic Facts and Figures:

- Issue over 1800 licences each year.
- 3 Licensing Officers
- 4 Support / Admin
- Income of £300k
- 35 Sub Committee hearings last year

Much More than Alcohol:

- Alcohol / Entertainment / Late Night Refreshment - 800
- Personal Licences – 2500
- Temporary Event Notices - 750
- Gambling – 120
- Lotteries – 100
- Animal Welfare – 50
- Special Treatments – 120
- Occasional Sales (Boot Fairs) – 100

Licensing Act 2003 – Key Points:

What activities needs a licence?

- Retail sale of alcohol
- Provision of Regulated Entertainment
- Indoor Sports
- Late Night Refreshments between 23.00 & 05.00

Duty on Licence Holders & the Council to promote the Licensing Objectives:

- Prevent Crime and Disorder
- Prevention of public nuisance
- Public Safety
- Protection of Children from Harm
- Council has to Publish a Licensing Policy
- Premises Licences
- Club Premises Licences
- Personal Licence (Designated Premises Supervisor - DPS)
- Temporary Event Notices

Responsible Authorities:

- Police
- Public Health Team
- Trading Standards
- Health & Safety
- Planning
- Fire Brigade
- Children's Safeguarding Board

Key Points:

- Interested Parties
 - Local Residents
 - Local Businesses
 - Ward Councillors
 - Public Consultation by applicant and Council
- If no objections – Council must grant the licence

The Application Process:

- Application Received & Fee (copies to all Responsible Authorities)
- Applicant advertises (Newspaper and notices on premises)
- Council undertakes public consultation
- 28 Days consultation
- If no objections – Council MUST grant
- If objections Licensing Sub-Committee must hear the application within 28 days
- Grant or Refuse a licence
- Appeals

Review of a License:

- Council has the power to undertake a Review of a licence
- Anyone can apply for a Review
- Purpose – to ensure the Licensing Objectives are being promoted
- Council can
 - Do nothing
 - Remove licensable activities from the licence
 - Add or amend licence conditions
 - Remove the DPS (Designated Premises Supervisor)
 - Suspend a licence for up to 3 months
 - Revoke a licence
 - Appeals to the Magistrates Court

Licensing Policy 2011-2014:

- Key changes:
 - Strengthening of the Councils Commitment to the principle of 'deemed refusal' in areas subject to special policies of cumulative impact.
 - Endorsement of a 'Challenge 25 policy'
 - Added a section on underage sales
 - Added a section on Drugs
 - Expanded the Role of Ward Councillors to include the right to apply for a 'Review'
 - Takeaways with alcohol sale for consumption off the premises.

Police Reform and Social Responsibility Bill:

- Councils become 'Responsible Authorities'
- Primary Care Trusts become 'Responsible Authorities'
- Change to 'Interested Parties' - no 'vicinity' test
- Council duty to Promote licensing objectives reduced from 'necessary' to 'appropriate'
- TENs (Temporary Event Notices)
 - Adds Environmental Health as objectors
 - Counter notices can be used on all Licensing Objectives
 - Late applications can be made (between 9-5 days)
 - A single TEN will run for up to 7 days (was 4)
 - A single premises can use TEN's over 21 days in a year (was 15 days)
- Early Morning Alcohol Restriction Orders - Council can make an order prohibiting supply of alcohol between 12 midnight and 6am
- Failing to Pay Annual Fee – Council will have power to suspend a licence until fee is paid
- Licensing Policy – Review every 5 years
- Late night Levy
 - Can charge a levy on premises selling alcohol between midnight and 6am
 - 70% must go to the Police
 - Detail of scheme will be set out in Regulations

Paul's contact details: Telephone: 020 8313 4216

Email: paul.lehane@bromley.gov.uk

3. **STREET PASTORS:** Presented by Ray Bell. Street Pastors are a group of volunteers from local churches who patrol the Town Centres on Friday nights offering a caring presence on the street, support/encouragement and practical help to young people, foster goodwill and a sense of community gain. In Bromley Borough, they concentrate on: Bromley Town Centre, Beckenham and Orpington. They do not get involved in any conflict and try to diffuse tension. They also supply flip flops as girls are inclined to remove their high heels and walk around bare feet which has caused injuries from glass etc.

Orpington Street Pastors began in September 2006, and volunteers have been out on the street every Friday night since February 2007. They issue the following contact card, with useful phone numbers on the reverse:



They wear blue visibility jackets/hats to assist recognition. Orpington Street Pastors Team (2006):



- Originally launched at Brixton Baptist Church 20th January 2003
- On the Street of Lambeth & Hackney in April 03
- Now have over 8,000 Street Pastors situated around the World: North/East/SE/SW of England, The Midlands, Scotland, Wales, Isle of Jersey, London Boroughs, Australia and many more Countries.

Benefits:

- Reduction in Street Crime – Police stats
- Church welcomed and expected on streets
- Church does what Police and LA can't do – engaging and changing hearts on the streets

Schools Pastors/Orpington College Pastors:

- Crime rate increases after school/College closes – their presence reassures High Street shoppers
- Individual Mentoring - Listening and building rapport – Opportunity for the Church to support Orpington College with approx 1400 students aged 16-19.
- School Bus Route Patrol
- School and Home Visits
- Bolts on to Street Pastors
- Orpington College Pilot Phase – in September 2011 launch a 2 day patrol each week 3-5.30pm with 11 volunteers.

Who can be a street pastor?

- Any person with passion for Jesus and the community
- Committed to their church for more than one year
- Personal reference from that church's pastor
- Attend the training programme
- Over 18
- Willing to learn, humble to change
- CRB Check

12 Saturdays of Training:

- Roles and responsibilities, Good news, Knowing your community, Drugs awareness, Education, Sociology, Probation, Youth provision, Police, Mentoring, Counselling, Child protection, Children's services, Mental health.

4. **SAFER BROMLEY PARTNERSHIP UPDATE:** Presented by Colin Newman, Head of Community Safety. Colin explained the following data and was pleased to announce that there has been a significant deduction in most types of crime (traffic light colour system is used: green for reductions, red for increase):

Performance Update 2010 – 2011

Most Serious Violence	-15.8%
Serious Youth Violence	-15.7%
Violence With Injury	-5.8%
Residential Burglary	-11.7%
Non Res Burglary	-24.1%
Gun Crime	-18.7%
Knife Crime	-1.4%
Robbery	+9.6%

End of Year Total Notifiable Offences **-7.4%**

Discussed the Portfolio Holder's drug campaign Enough is Enough – the message is that Bromley will not tolerate drug dealing on this Borough.

Enforcement:

- 31 Warrants Where Controlled Drugs Being Recovered
- 11 People Charged
- 12 People Remain on Pre-charge Bail for Drug and Other Offences
- 6 Drug Dog Operations in Public Houses
- Publicity and Communications Campaign

Prevention:

- 183 Talks by Schools Officers
- 66 Interventions by ByPass
- Junior Citizens Programme (School years 6-7)

Securing Priority Services:

- Domestic Abuse Advocates
- Mentoring Initiative
- Safer Bromley Van

5. ANY OTHER BUSINESS:

- a) BCEF Executive Committee nominations – Self nomination papers will be sent shortly to all members. Deadline Monday 6 June 2011. Voting will take place at the AGM on 6 July.
 - b) Bromley/Lewisham Immigration Team: Jennifer Gordon, Chief Immigration Officer, introduced herself and Simon Redfern who is based in Bromley. They welcome the opportunity to work closer with SNPs and discussed briefly their role on the Borough. They will also be available to talk to at our next meeting on 6 July.
 - c) BCEFs Community Outreach Day, 26 April: Another very successful day, based in the Glades Shopping Centre. We worked with the Safer Transport Team and Bromley's Immigration Team to discuss any concerns raised by the public, who also completed a survey on community safety. Our thanks to the volunteers for helping us man our stall. There was much praise for Police teams and the work that has been done to address anti social behaviour problems. The figures show that the public's perception that crime on buses has fallen and people generally feel safer travelling on buses in the borough. Passengers travelling on bus route 208 in particular, which was previously subject to much public concern, praised the Safer Transport Team and stated that they felt safe during the day. It is noted that this is the first Outreach Day where 'cold callers' has been identified as a public issue on this borough and will be raised at the next Partnership meeting. The Survey responses can be found on our Website: www.bcef.org.uk
- 6. DATE OF NEXT MEETING/AGM:** Wed 6 July, Bromley Football Club, Hayes Lane, Bromley BR2 9EF. Election of BCEF Executive Committee and delighted to announce our Guest Speaker will be Commander Bob Broadhurst. Main meeting starts at 7pm, but from 6.30pm free light buffet and information stands. If you would like to host an information stand from 6.30pm to showcase your organisation's work, please contact Amanda Evans in advance – amanda.evans@bcef.org.uk or telephone: 020 86587168.